

Recombinant ETHE1/HSCO Monoclonal Antibody

catalog number: **AN300124P**

Note: Centrifuge before opening to ensure complete recovery of vial contents.

Description

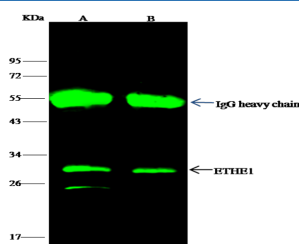
Reactivity	Human
Immunogen	Recombinant Human ETHE1 / HSCO Protein
Host	Rabbit
Isotype	IgG
Clone	5D3
Purification	Protein A
Buffer	0.2 µm filtered solution in PBS

Applications

Recommended Dilution

WB	1:500-1:2000
IP	1-4 µL/mg of lysate

Data



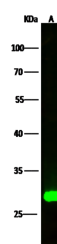
Immunoprecipitation analysis using 2 µL anti-ETHE1 Monoclonal Antibody and 15 µl of 50 % Protein G agarose.

Western blot was performed from the immunoprecipitate using ETHE1 Monoclonal Antibody at a dilution of 1:100.

Lane A: 0.5 mg Hela Whole Cell Lysate, Lane B: 0.5 mg Jurkat Whole Cell Lysate

Observed-MW: 28 kDa

Calculated-MW: 28 kDa



Western Blot with ETHE1 / HSCO Monoclonal Antibody at dilution of 1:500. Lane A: HepG2 Whole Cell Lysate, Lysates/proteins at 30 µg per lane.

Observed-MW: 28 kDa

Calculated-MW: 28 kDa

Preparation & Storage

Storage This antibody can be stored at 2°C-8°C for one month without detectable loss of activity. Antibody products are stable for twelve months from date of receipt when stored at -20°C to -80°C. Preservative-Free. Avoid repeated freeze-thaw cycles.

Shipping Ice bag

Background

This gene encodes a member of the metallo beta-lactamase family of iron-containing proteins involved in the mitochondrial sulfide oxidation pathway. The encoded protein catalyzes the oxidation of a persulfide substrate to sulfite. Certain mutations in this gene cause ethylmalonic encephalopathy, an infantile metabolic disorder affecting the brain, gastrointestinal tract and peripheral vessels. Alternative splicing results in multiple transcript variants encoding different isoforms.

For Research Use Only