

## Recombinant Human B7-H6 Protein (His Tag)

Catalog Number: PKSH033283

**Note:** Centrifuge before opening to ensure complete recovery of vial contents.

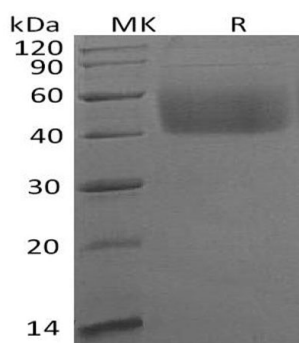
### Description

<b>Species</b>	Human
<b>Source</b>	HEK293 Cells-derived Human B7-H6 protein Asp25-Ser262, with an C-terminal His
<b>Calculated MW</b>	27.5 kDa
<b>Observed MW</b>	40-60 kDa
<b>Accession</b>	Q68D85
<b>Bio-activity</b>	Not validated for activity

### Properties

<b>Purity</b>	> 95 % as determined by reducing SDS-PAGE.
<b>Endotoxin</b>	< 1.0 EU per µg of the protein as determined by the LAL method.
<b>Storage</b>	Generally, lyophilized proteins are stable for up to 12 months when stored at -20 to -80°C. Reconstituted protein solution can be stored at 4-8°C for 2-7 days. Aliquots of reconstituted samples are stable at < -20°C for 3 months.
<b>Shipping</b>	This product is provided as lyophilized powder which is shipped with ice packs.
<b>Formulation</b>	Lyophilized from a 0.2 µm filtered solution of PBS, pH 7.4. Normally 5% - 8% trehalose, mannitol and 0.01% Tween 80 are added as protectants before lyophilization.
<b>Reconstitution</b>	Please refer to the specific buffer information in the printed manual. Please refer to the printed manual for detailed information.

### Data



> 95 % as determined by reducing SDS-PAGE.

### Background

Natural cytotoxicity triggering receptor 3 ligand 1 (B7-H6) is a glycosylated member of the B7 family of immune costimulatory proteins. Mature human B7-H6 consists of a 238 amino acid (aa) extracellular domain (ECD) that contains one Ig-like V domain and one Ig-like C1 domain, a 21 aa transmembrane segment, and a 171 aa cytoplasmic domain that contains one ITIM, one SH2, and one SH3 motif. Both of the Ig-like domains carry N-linked glycosylation. The Ig-like V domain mediates 1:1 stoichiometric binding of B7-H6 to NKp30 expressed on NK cells. It does not show binding to NKp44, NKp46, or NKG2D. Ligation of NKp30 by B7-H6 induces NK cell activation and target cell cytotoxicity. B7-H6 is expressed on a wide range of hematopoietic, carcinoma, and melanoma tumor cells, which is consistent with the detection of NKp30 binding sites on many tumors.

### For Research Use Only

Toll-free: 1-888-852-8623  
Web: [www.elabscience.com](http://www.elabscience.com)

Tel: 1-832-243-6086  
Email: [techsupport@elabscience.com](mailto:techsupport@elabscience.com)

Fax: 1-832-243-6017