

FAN1 Polyclonal Antibody

catalog number: E-AB-17946

Note: Centrifuge before opening to ensure complete recovery of vial contents.

Description

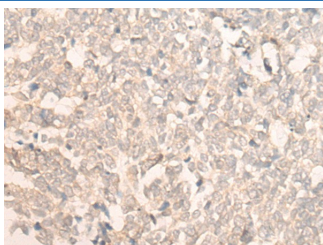
Reactivity	Human
Immunogen	Synthetic peptide of human FAN1
Host	Rabbit
Isotype	IgG
Purification	Antigen affinity purification
Conjugation	Unconjugated
Buffer	Phosphate buffered solution, pH 7.4, containing 0.05% stabilizer and 50% glycerol.

Applications

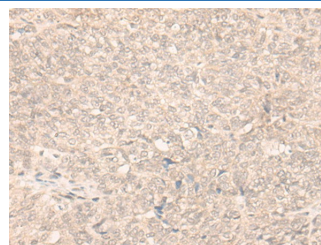
Recommended Dilution

IHC	1:30-1:150
------------	------------

Data



Immunohistochemistry of paraffin-embedded Human lung cancer tissue using FAN1 Polyclonal Antibody at dilution of 1:30(×200)



Immunohistochemistry of paraffin-embedded Human ovarian cancer tissue using FAN1 Polyclonal Antibody at dilution of 1:30(×200)

Preparation & Storage

Storage	Store at -20°C Valid for 12 months. Avoid freeze / thaw cycles.
Shipping	The product is shipped with ice pack, upon receipt, store it immediately at the temperature recommended.

Background

This gene plays a role in DNA interstrand cross-link repair and encodes a protein with 5' flap endonuclease and 5'-3' exonuclease activity. Mutations in this gene cause karyomegalic interstitial nephritis. Alternatively spliced transcript variants encoding distinct isoforms have been described.