

Recombinant Human ADAM8/CD156a protein (His tag)^{dg}

Catalog Number:PDMH100073

DIA • AN[®]
by Elabscience

Note: Centrifuge before opening to ensure complete recovery of vial contents.

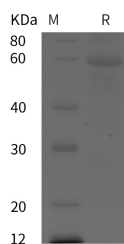
Description

Synonyms	Disintegrin and metalloproteinase domain-containing protein 8;ADAM 8;EC 3.4.24.;Cell surface antigen MS2;CD antigen CD156a;MS2
Species	Human
Expression Host	HEK293 Cells
Sequence	Met1-Ser653
Accession	P78325
Calculated Molecular Weight	71.7 kDa
Observed molecular weight	60 kDa
Tag	C-His

Properties

Purity	> 95 % as determined by reducing SDS-PAGE.
Endotoxin	Please contact us for more information.
Storage	Generally, lyophilized proteins are stable for up to 12 months when stored at -20 to -80°C. Reconstituted protein solution can be stored at 4-8°C for 2-7 days. Aliquots of reconstituted samples are stable at < -20°C for 3 months.
Shipping	This product is provided as lyophilized powder which is shipped with ice packs.
Formulation	Lyophilized from sterile PBS, pH 7.4. Normally 5 % - 8 % trehalose, mannitol and 0.01 % Tween80 are added as protectants before lyophilization. Please refer to the specific buffer information in the printed manual.
Reconstitution	Please refer to the printed manual for detailed information.

Data



> 95 % as determined by reducing SDS-PAGE.

Background

ADAM8, also known as cell surface antigen MS2 or CD156a, is a member of the ADAM family that contains a disintegrin and metalloprotease-like domain. ADAM8 can cleave a variety of substrates and has been shown as a sheddase for the low affinity IgE receptor CD23 and the neural recognition molecule CHL1. Expression and regulation studies suggest that ADAM8 is a novel osteoclast stimulating factor and may play a role in asthma. It can be activated and assayed under the conditions described in the Activity Assay Protocol.

For Research Use Only

A Reliable Research Partner in Life Science and Medicine

Toll-free: 1-888-852-8623

Web: www.elabscience.com

Tel: 1-832-243-6086

Email: techsupport@elabscience.com

Fax: 1-832-243-6017