

Note: Centrifuge before opening to ensure complete recovery of vial contents.

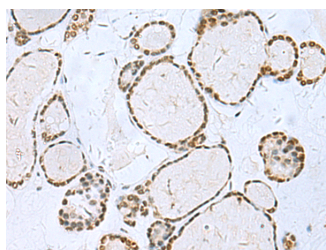
Description

Reactivity	Human
Immunogen	Synthetic peptide of human TH
Host	Rabbit
Isotype	IgG
Purification	Antigen affinity purification
Conjugation	Unconjugated
Formulation	PBS with 0.05% NaN ₃ and 40% Glycerol,pH7.4

Applications Recommended Dilution

IHC	1:50-1:100
ELISA	1:5000-1:10000

Data



Immunohistochemistry of paraffin-embedded Human thyroid cancer tissue using TH Polyclonal Antibody at dilution of 1:40(×200)

Preparation & Storage

Storage Store at -20°C. Avoid freeze / thaw cycles.

Background

TH(Tyrosine 3-monooxygenase) converts L-tyrosine to L-3,4-dihydroxyphenylalanine (L-DOPA),the essential and rate-limiting step to formation of dopamine and other catecholamines. TH plays an important role in the physiology of adrenergic neurons and can be used as a marker for dopaminergic and noradrenergic neurons.

For Research Use Only

A Reliable Research Partner in Life Science and Medicine

Toll-free: 1-888-852-8623

Web: www.elabscience.com

Tel: 1-832-243-6086

Email: techsupport@elabscience.com

Fax: 1-832-243-6017