

## Elab Fluor® 700 Anti-Mouse IgM Antibody[RMM-1]

Catalog Number: E-AB-F1190UM1

**Note:** Centrifuge before opening to ensure complete recovery of vial contents.

### Description

|                                |                                                                                                                                                                        |
|--------------------------------|------------------------------------------------------------------------------------------------------------------------------------------------------------------------|
| <b>Reactivity</b>              | Mouse                                                                                                                                                                  |
| <b>Host</b>                    | Rat                                                                                                                                                                    |
| <b>Isotype</b>                 | Rat IgG2a, $\kappa$                                                                                                                                                    |
| <b>Clone No.</b>               | RMM-1                                                                                                                                                                  |
| <b>Isotype Control</b>         | Elab Fluor® 700 Rat IgG2a, $\kappa$ Isotype Control[2A3] [Product E-AB-F09833M1]                                                                                       |
| <b>Conjugation</b>             | Elab Fluor® 700                                                                                                                                                        |
| <b>Conjugation Information</b> | Elab Fluor® 700 is designed to be excited by the Red laser (627-640 nm) and detected using an optical filter centered near 719 nm (e.g., a 725/40 nm bandpass filter). |
| <b>Storage Buffer</b>          | Phosphate buffered solution, pH 7.2, containing 0.09% sodium azide and 1% BSA.                                                                                         |

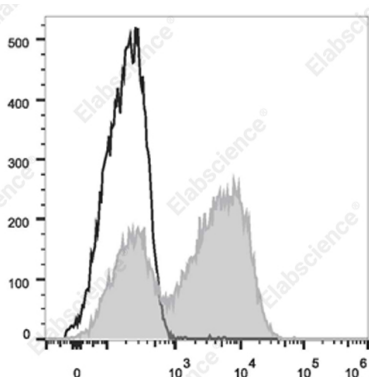
### Applications

### Recommended usage

#### FCM

Each lot of this antibody is quality control tested by flow cytometric analysis. Please check your vial before the experiment. Since applications vary, the appropriate dilutions must be determined for individual use. We suggest each investigator should titrate the reagent to obtain optimal results [The recommended concentration is 0.1-1  $\mu\text{g}/10^6$  cells in 100  $\mu\text{L}$  volume].

### Data



Staining of C57BL/6 murine splenocytes cells with Elab Fluor

® 700 Anti-Mouse IgM Antibody[RMM-1] (filled gray

histogram) or Elab Fluor® 700 Rat IgG2a,  $\kappa$  Isotype Control (empty black histogram). Total viable cells were used for analysis.

### Preparation & Storage

|                 |                                                                                                                                                           |
|-----------------|-----------------------------------------------------------------------------------------------------------------------------------------------------------|
| <b>Storage</b>  | Keep as concentrated solution.<br>This product can be stored at 2-8°C for 12 months. Please protected from prolonged exposure to light and do not freeze. |
| <b>Shipping</b> | Ice bag                                                                                                                                                   |

### Antigen Information

|                        |                                                        |
|------------------------|--------------------------------------------------------|
| <b>Alternate Names</b> | IGHM;Immunoglobulin M;Immunoglobulin heavy constant mu |
| <b>Uniprot ID</b>      | P01872                                                 |
| <b>Gene ID</b>         | 16019                                                  |

### For Research Use Only

## Background

IgM is the first immunoglobulin made by B cells in the immune response. Surface IgM is expressed on the majority of mature B cells.