

EMX1 Polyclonal Antibody

catalog number: E-AB-19803

Note: Centrifuge before opening to ensure complete recovery of vial contents.

Description

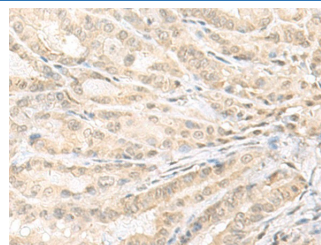
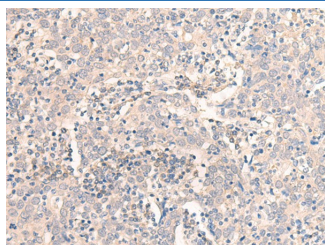
Reactivity	Human;Mouse
Immunogen	Synthetic peptide of human EMX1
Host	Rabbit
Isotype	IgG
Purification	Antigen affinity purification
Buffer	Phosphate buffered solution, pH 7.4, containing 0.05% stabilizer and 50% glycerol.

Applications

Recommended Dilution

IHC	1:30-1:150
------------	------------

Data



Immunohistochemistry of paraffin-embedded Human cervical cancer tissue using EMX1 Polyclonal Antibody at dilution of 1:25(×200)

Immunohistochemistry of paraffin-embedded Human thyroid cancer tissue using EMX1 Polyclonal Antibody at dilution of 1:25(×200)

Preparation & Storage

Storage	Store at -20°C Valid for 12 months. Avoid freeze / thaw cycles.
Shipping	The product is shipped with ice pack,upon receipt,store it immediately at the temperature recommended.

Background

EMX1 (Empty Spiracles Homeobox 1) is a Protein Coding gene. Diseases associated with EMX1 include Kallmann Syndrome. GO annotations related to this gene include sequence-specific DNA binding. An important paralog of this gene is EMX2.

For Research Use Only