

# Purified Anti-Mouse CD8a Antibody[53-6.7]

catalog number: E-AB-F1104A

**Note:** Centrifuge before opening to ensure complete recovery of vial contents.

## Description

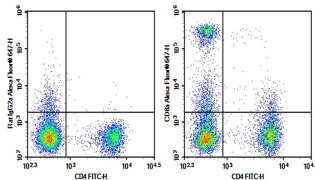
|                     |  |
|---------------------|--|
| <b>Reactivity</b>   | Mouse                                    |
| <b>Immunogen</b>    | Recombinant Mouse CD8a protein           |
| <b>Host</b>         | Rat                                      |
| <b>Isotype</b>      | Rat IgG2a, $\kappa$                      |
| <b>Clone</b>        | 53-6.7                                   |
| <b>Purification</b> | >98%, Protein A/G purified               |
| <b>Conjugation</b>  | Unconjugated                             |
| <b>buffer</b>       | PBS, pH 7.2. Contains 0.05% proclin 300. |

## Applications

## Recommended Dilution

|            |  |
|------------|--|
| <b>FCM</b> | 2 $\mu\text{g}/\text{mL}$ ( $1 \times 10^5$ - $5 \times 10^5$ cells) |
|------------|--|

## Data



C57/BL6 Mouse splenocytes were stained with 0.2  $\mu\text{g}$  AF/LE Purified Anti-Mouse CD8a Antibody[53-6.7](Right) and 0.2  $\mu\text{g}$  Rat IgG2a,  $\kappa$  Isotype Control(Left), followed by Alexa Fluor<sup>®</sup> 647-conjugated Goat Anti-Rat IgG Secondary Antibody, then anti-Mouse CD4 FITC-conjugated Monoclonal Antibody.

## Preparation & Storage

|                 |  |
|-----------------|--|
| <b>Storage</b>  | Store at 4°C valid for 12 months or -20°C valid for long term storage, avoid freeze / thaw cycles. |
| <b>Shipping</b> | Ice bag  |

## Background

CD8, also known as Lyt-2, Ly-2, or T8, consists of disulfide-linked  $\alpha$  and  $\beta$  chains that form the  $\alpha(\text{CD8a})/\beta(\text{CD8b})$  heterodimer and  $\alpha/\alpha$  homodimer. CD8a is a 34 kD protein that belongs to the immunoglobulin family. The CD8  $\alpha/\beta$  heterodimer is expressed on the surface of most thymocytes and a subset of mature TCR  $\alpha/\beta$  T cells. CD8 expression on mature T cells is non-overlapping with CD4. The CD8  $\alpha/\alpha$  homodimer is expressed on a subset of  $\gamma/\delta$  TCR-bearing T cells, NK cells, intestinal intraepithelial lymphocytes, and lymphoid dendritic cells. CD8 is an antigen co-receptor on T cells that interacts with MHC class I on antigen-presenting cells or epithelial cells. CD8 promotes T cell activation through its association with the TCR complex and protein tyrosine kinase lck.

## For Research Use Only