

Recombinant Human ZBED1 Protein (His Tag)

Catalog Number: PKSH033233

Note: Centrifuge before opening to ensure complete recovery of vial contents.

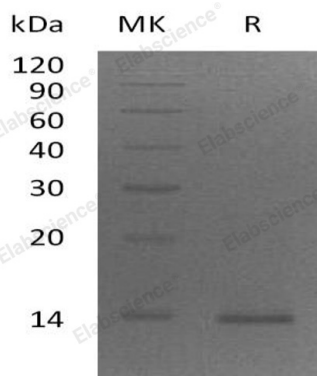
Description

Species	Human
Source	E.coli-derived Human ZBED1 protein Asn3-Glu100, with an C-terminal His
Calculated MW	12.5 kDa
Observed MW	14 kDa
Accession	O96006
Bio-activity	Not validated for activity

Properties

Purity	> 95 % as determined by reducing SDS-PAGE.
Endotoxin	< 1.0 EU per µg of the protein as determined by the LAL method.
Storage	Generally, lyophilized proteins are stable for up to 12 months when stored at -20 to -80°C. Reconstituted protein solution can be stored at 4-8°C for 2-7 days. Aliquots of reconstituted samples are stable at < -20°C for 3 months.
Shipping	This product is provided as lyophilized powder which is shipped with ice packs.
Formulation	Lyophilized from a 0.2 µm filtered solution of PBS, pH 7.4. Normally 5% - 8% trehalose, mannitol and 0.01% Tween 80 are added as protectants before lyophilization. Please refer to the specific buffer information in the printed manual.
Reconstitution	Please refer to the printed manual for detailed information.

Data



> 95 % as determined by reducing SDS-PAGE.

Background

Zinc Finger BED Domain-Containing Protein 1 (ZBED1) contains one BED-type zinc finger and is found in the cell nucleus. ZBED1 is widely expressed, highly in heart, skeletal muscle, spleen and placenta. The expression of ZBED1 is usually linked to the cell cycle. During the G1/S phase, the expression is increasing. During the S/G2 phase, the expression reaches to the highest, and then decreasing. ZBED1 exists in homodimer forms, which can bind to 5'-TGTCGG[CT]GA[CT]A-3' DNA elements, that can be found in the promoter regions of a number of gene related to cell proliferation.

For Research Use Only

Toll-free: 1-888-852-8623
Web: www.elabscience.com

Tel: 1-832-243-6086
Email: techsupport@elabscience.com

Fax: 1-832-243-6017