

## Elab Fluor® 647 Anti-Human HLA-A,B,C Antibody[W6/32]

Catalog Number: E-AB-F1130M

**Note:** Centrifuge before opening to ensure complete recovery of vial contents.

### Description

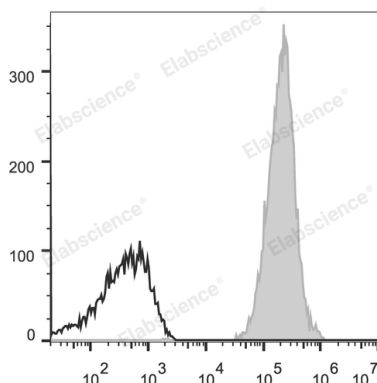
<b>Reactivity</b>	Human
<b>Host</b>	Mouse
<b>Isotype</b>	Mouse IgG2a, κ
<b>Clone No.</b>	W6/32
<b>Isotype Control</b>	Elab Fluor® 647 Mouse IgG2a, κ Isotype Control[C1.18.4] [Product E-AB-F09802M]
<b>Conjugation</b>	Elab Fluor® 647
<b>Conjugation Information</b>	Elab Fluor® 647 is designed to be excited by the Red laser (627-640 nm) and detected using an optical filter centered near 670 nm (e.g., a 660/20 nm bandpass filter).
<b>Storage Buffer</b>	Phosphate buffered solution, pH 7.2, containing 0.09% stabilizer.

### Applications

### Recommended usage

**FCM** Each lot of this antibody is quality control tested by flow cytometric analysis. **The amount of the reagent is suggested to be used 5 μL of antibody per test (million cells in 100 μL staining volume or per 100 μL of whole blood).** Please check your vial before the experiment. Since applications vary, the appropriate dilutions must be determined for individual use.

### Data



Human peripheral blood lymphocytes are stained with Elab Fluor® 647 Anti-Human HLA-A,B,C Antibody (filled gray histogram). Unstained lymphocytes (empty black histogram) are used as control.

### Preparation & Storage

<b>Storage</b>	Keep as concentrated solution. This product can be stored at 2-8°C for 24 months. Please protected from prolonged exposure to light and do not freeze.
<b>Shipping</b>	Ice bag

### Antigen Information

<b>Alternate Names</b>	MHC class I;Major Histocompatibility Class I
<b>Uniprot ID</b>	P04439;P01889;P10321
<b>Gene ID</b>	3105;3106;3107

### For Research Use Only

## Background

MHC class I antigens associated with  $\beta$ 2-microglobulin are expressed by all human nucleated cells. MHC class I molecules are involved in presentation of antigens to CD8 + T cells. They play an important role in cell-mediated immune responses and tumor surveillance.