

USP6NL Polyclonal Antibody

Catalog Number:E-AB-52447



Note: Centrifuge before opening to ensure complete recovery of vial contents.

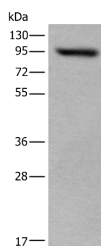
Description

Reactivity	Human
Immunogen	Fusion protein of human USP6NL
Host	Rabbit
Isotype	IgG
Purification	Antigen affinity purification
Conjugation	Unconjugated
Formulation	PBS with 0.05% NaN3 and 40% Glycerol,pH7.4

Applications Recommended Dilution

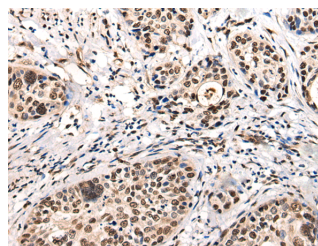
WB	1:500-1:2000
IHC	1:25-1:100
ELISA	1:5000-1:10000

Data



Western blot analysis of 293T cell lysate using USP6NL Polyclonal Antibody at dilution of 1:400

Observed Mw:Refer to figures
Calculated Mw:94 kDa



Immunohistochemistry of paraffin-embedded Human cervical cancer tissue using USP6NL Polyclonal Antibody at dilution of 1:30(x200)

Preparation & Storage

Storage Store at -20°C. Avoid freeze / thaw cycles.

Background

Acts as a GTPase-activating protein for RAB5A. Involved in receptor trafficking. In complex with EPS8 inhibits internalization of EGFR.

For Research Use Only

A Reliable Research Partner in Life Science and Medicine

Toll-free: 1-888-852-8623

Web: www.elabscience.com

Tel: 1-832-243-6086

Email: techsupport@elabscience.com

Fax: 1-832-243-6017