

## Elab Fluor® Violet 450 Anti-Mouse CD19 Antibody[1D3]

Catalog Number: E-AB-F0986Q

**Note:** Centrifuge before opening to ensure complete recovery of vial contents.

### Description

Reactivity	Mouse
Host	Rat
Isotype	Rat IgG2a, κ
Clone No.	1D3
Isotype Control	Elab Fluor® Violet 450 Rat IgG2a, κ Isotype Control[2A3] [Product E-AB-F09832Q]
Conjugation	Elab Fluor® Violet 450
Conjugation Information	Elab Fluor® Violet 450 is designed to be excited by the violet laser (405 nm) and detected using an optical filter centered near 450 nm (e.g., a 450/45 nm bandpass filter).
Storage Buffer	Phosphate buffered solution, pH 7.2, containing 0.09% sodium azide and 1% BSA.

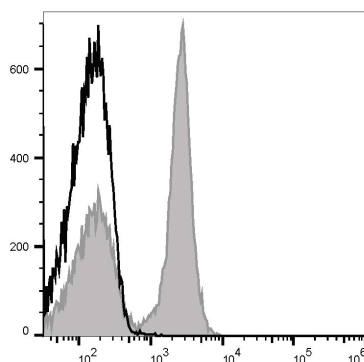
### Applications

### Recommended usage

#### FCM

Each lot of this antibody is quality control tested by flow cytometric analysis. **The amount of the reagent is suggested to be used 5 μL of antibody per test (million cells in 100 μL staining volume or per 100 μL of whole blood).** Please check your vial before the experiment. Since applications vary, the appropriate dilutions must be determined for individual use.

### Data



Staining of C57BL/6 murine splenocytes with Elab Fluor® Violet 450 Anti-Mouse CD19 Antibody[1D3] (filled gray

histogram) or Elab Fluor® Violet 450 Rat IgG2a, κ Isotype Control (empty black histogram). Total viable cells were used for analysis.

### Preparation & Storage

Storage	Keep as concentrated solution. This product can be stored at 2-8°C for 12 months. Please protected from prolonged exposure to light and do not freeze.
Shipping	Ice bag

### Antigen Information

Alternate Names	B-lymphocyte antigen CD19;CD19;Cd19;Differentiation antigen CD19
Uniprot ID	P25918
Gene ID	12478

### For Research Use Only

## Background

CD19 is a 95 kD glycoprotein also known as B4. It is a member of the Ig superfamily, expressed on all pro-B to mature B cells (during development) and follicular dendritic cells. Plasma cells do not express CD19. CD19, in association with CD21 and CD81, forms a molecular complex integral to B cell activation.