

## SPATA20 Polyclonal Antibody

**catalog number: E-AB-16072**

**Note:** Centrifuge before opening to ensure complete recovery of vial contents.

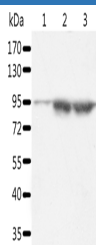
### Description

<b>Reactivity</b>	Human
<b>Immunogen</b>	Synthetic peptide of human SPATA20
<b>Host</b>	Rabbit
<b>Isotype</b>	IgG
<b>Purification</b>	Affinity purification
<b>Buffer</b>	Phosphate buffered solution, pH 7.4, containing 0.05% stabilizer and 50% glycerol.

### Applications

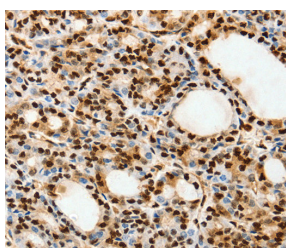
Applications	Recommended Dilution
<b>WB</b>	1:500-1:2000
<b>IHC</b>	1:100-1:300

### Data

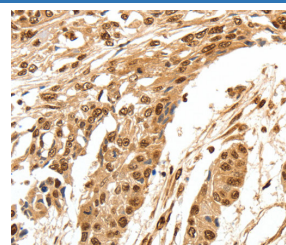


Western Blot analysis of A549 and Incap cell, Human seminoma tissue using SPATA20 Polyclonal Antibody at dilution of 1:1000

**Calculated-MV:88 kDa**



Immunohistochemistry of paraffin-embedded Human thyroid cancer using SPATA20 Polyclonal Antibody at dilution of 1:70



Immunohistochemistry of paraffin-embedded Human esophagus cancer using SPATA20 Polyclonal Antibody at dilution of 1:70

### Preparation & Storage

<b>Storage</b>	Store at -20°C Valid for 12 months. Avoid freeze / thaw cycles.
<b>Shipping</b>	The product is shipped with ice pack, upon receipt, store it immediately at the temperature recommended.

### Background

The protein may play a role in fertility regulation. It were significantly upregulated in individual bile samples from Cholangiocarcinoma patients by Western blotting and Immunohistochemistry, relative to normal tissues. It acts as a potential serum diagnostic biomarker for Cholangiocarcinoma.

### For Research Use Only