

## Recombinant Cynomolgus Interleukin-17A/IL-17A (C-6His)

**Catalog Number:** PKSQ050109

**Note:** Centrifuge before opening to ensure complete recovery of vial contents.

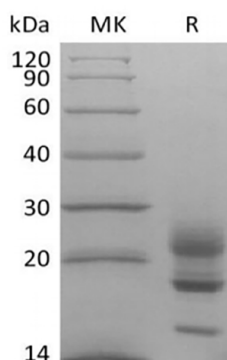
### Description

<b>Species</b>	Cynomolgus macaques
<b>Source</b>	HEK293 Cells-derived Cynomolgus macaques Interleukin-17A/IL-17A protein Gly24-Ala155, with an C-terminal His
<b>Calculated MW</b>	15.9 kDa
<b>Observed MW</b>	15-25 kDa
<b>Accession</b>	G7P4U9
<b>Bio-activity</b>	Immobilized Cynomolgus IL-17A-His (Cat#PKSQ050109) at 10 µg/ml (100 µl/well) can bind Anti-Human IL-17A mAb. The ED <sub>50</sub> of Anti-Human IL-17A mAb is 128 ng/ml.

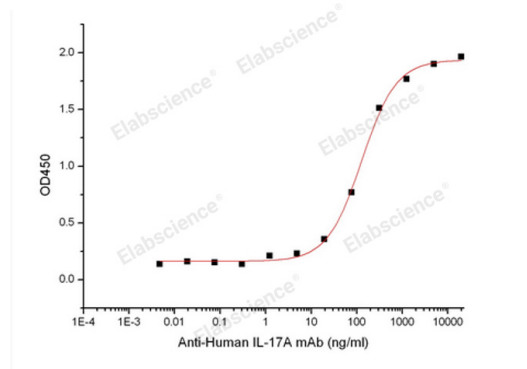
### Properties

<b>Purity</b>	> 95 % as determined by reducing SDS-PAGE.
<b>Endotoxin</b>	< 1.0 EU per µg of the protein as determined by the LAL method.
<b>Storage</b>	Generally, lyophilized proteins are stable for up to 12 months when stored at -20 to -80 °C. Reconstituted protein solution can be stored at 4-8°C for 2-7 days. Aliquots of reconstituted samples are stable at < -20°C for 3 months.
<b>Shipping</b>	This product is provided as lyophilized powder which is shipped with ice packs.
<b>Formulation</b>	Lyophilized from a 0.2 µm filtered solution of PBS, pH 7.4. Normally 5% - 8% trehalose, mannitol and 0.01% Tween 80 are added as protectants before lyophilization.
<b>Reconstitution</b>	Please refer to the specific buffer information in the printed manual. Please refer to the printed manual for detailed information.

### Data



> 95 % as determined by reducing SDS-PAGE.



Immobilized Cynomolgus IL-17A-His (Cat#PKSQ050109) at 10 µg/ml (100 µl/well) can bind Anti-Human IL-17A mAb. The ED<sub>50</sub> of Anti-Human IL-17A mAb is 128 ng/ml.

### Background

### For Research Use Only

Interleukin-17 is a potent pro-inflammatory cytokine produced by activated memory T cells. There are at least six members of the IL-17 family in humans and in mice. As IL-17 shares properties with IL-1 and TNF-alpha, it may induce joint inflammation and bone and cartilage destruction. This cytokine is found in synovial fluids of patients with rheumatoid arthritis, and produced by rheumatoid arthritis synovium. It increases IL-6 production, induces collagen degradation and decreases collagen synthesis by synovium and cartilage and proteoglycan synthesis in cartilage. IL-17 is also able to increase bone destruction and reduce its formation. Blocking of interleukin-17 with specific inhibitors provides a protective inhibition of cartilage and bone degradation.