

P38 Polyclonal Antibody

catalog number: E-AB-70001

Note: Centrifuge before opening to ensure complete recovery of vial contents.

Description

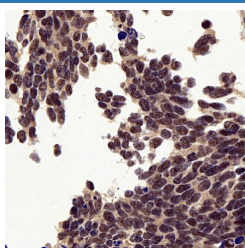
Reactivity	Human;Mouse;Rat
Immunogen	KLH conjugated Synthetic peptide corresponding to Mouse P38 MAPK
Host	Rabbit
Isotype	IgG
Purification	Affinity purification
Conjugation	Unconjugated
Buffer	Phosphate buffered solution, pH 7.4, containing 0.05% stabilizer, 1% protein protectant and 50% glycerol.

Applications

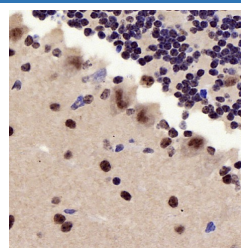
Recommended Dilution

IHC	1:500-1:2000
------------	--------------

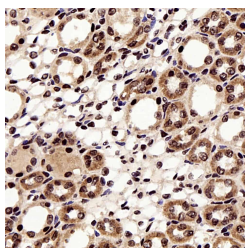
Data



Immunohistochemistry analysis of paraffin-embedded Human lung cancer using P38 Polyclonal Antibody at dilution of 1:500.



Immunohistochemistry analysis of paraffin-embedded Mouse brain using P38 Polyclonal Antibody at dilution of 1:500.



Immunohistochemistry analysis of paraffin-embedded Rat kidney using P38 Polyclonal Antibody at dilution of 1:500.

Preparation & Storage

Storage	Store at -20°C Valid for 12 months. Avoid freeze / thaw cycles.
Shipping	The product is shipped with ice pack, upon receipt, store it immediately at the temperature recommended.

Background

For Research Use Only

MAPK14(mitogen-activated protein kinase 14) is also named as SAPK2A,p38MAPK,CSBP1,RK,p38,EXIP,Mxi2,CSBP2,PRKM14,PRKM15,CSPB1,p38ALPHA and belongs to the MAP kinase subfamily. MAPK14-signaling is a central pathway for the integration of instructive signals in dendritic cells for T(H)17 differentiation and inflammation. It plays an important role in the regulation of hematopoietic stem cell self-renewal in vitro and inhibition of MAPK14 activation with a small molecule inhibitor may represent a novel approach to promote ex vivo expansion of hematopoietic stem cell. This protein has 4 isoforms produced by alternative splicing.