

## Recombinant Human PNLIPRP1/PLRP1 Protein (His Tag)

**Catalog Number:** PKSH032849

**Note:** Centrifuge before opening to ensure complete recovery of vial contents.

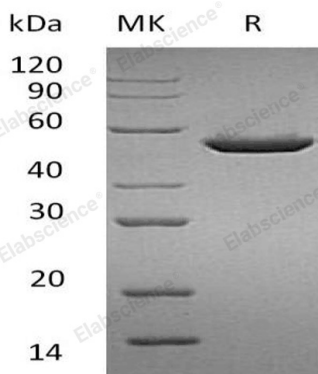
### Description

<b>Species</b>	Human
<b>Source</b>	HEK293 Cells-derived Human PNLIPRP1;PLRP1 protein Lys18-Cys467, with an C-terminal His
<b>Calculated MW</b>	51.0 kDa
<b>Observed MW</b>	44-50 kDa
<b>Accession</b>	AAH25784.1
<b>Bio-activity</b>	Not validated for activity

### Properties

<b>Purity</b>	> 90 % as determined by reducing SDS-PAGE.
<b>Endotoxin</b>	< 1.0 EU per µg of the protein as determined by the LAL method.
<b>Storage</b>	Generally, lyophilized proteins are stable for up to 12 months when stored at -20 to -80°C. Reconstituted protein solution can be stored at 4-8°C for 2-7 days. Aliquots of reconstituted samples are stable at < -20°C for 3 months.
<b>Shipping</b>	This product is provided as lyophilized powder which is shipped with ice packs.
<b>Formulation</b>	Lyophilized from a 0.2 µm filtered solution of 20mM PB, 150mM NaCl, pH 7.4. Normally 5% - 8% trehalose, mannitol and 0.01% Tween 80 are added as protectants before lyophilization.
	Please refer to the specific buffer information in the printed manual.
<b>Reconstitution</b>	Please refer to the printed manual for detailed information.

### Data



> 90 % as determined by reducing SDS-PAGE.

### Background

Pancreatic Lipase-Related Protein 1 (PNLIPRP1) belongs to the Lipase family within the AB hydrolase superfamily. PNLIPRP1 is a secreted protein and contains one PLAT domain. PNLIPRP1 is involved in lipid metabolic process, acting as a negative regulator of pancreatic lipase activity by competing with pancreatic lipase for colipase occupancy. PNLIPRP1 may play a role in inhibiting dietary triglyceride digestion, but it lacks detectable lipase activity towards triglycerides, diglycerides, phosphatidylcholine, galactolipids or cholesterol esters.

### For Research Use Only