

Recombinant Human CD14 Protein (His Tag)

Catalog Number:PKSH032203



Note: Centrifuge before opening to ensure complete recovery of vial contents.

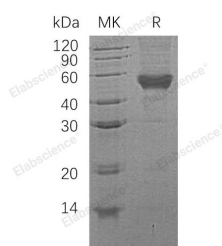
Description

| | |
|------------------------------------|--|
| Synonyms | Monocyte Differentiation Antigen CD14;Myeloid Cell-Specific Leucine-Rich Glycoprotein;CD14 |
| Species | Human |
| Expression Host | HEK293 Cells |
| Sequence | Thr 20-Cys352 |
| Accession | P08571 |
| Calculated Molecular Weight | 36.8 kDa |
| Observed molecular weight | 54 kDa |
| Tag | C-His |

Properties

| | |
|-----------------------|---|
| Purity | > 95 % as determined by reducing SDS-PAGE. |
| Endotoxin | < 1.0 EU per µg of the protein as determined by the LAL method. |
| Storage | Generally, lyophilized proteins are stable for up to 12 months when stored at -20 to -80°C. Reconstituted protein solution can be stored at 4-8°C for 2-7 days. Aliquots of reconstituted samples are stable at < -20°C for 3 months. |
| Shipping | This product is provided as lyophilized powder which is shipped with ice packs. |
| Formulation | Lyophilized from a 0.2 µm filtered solution of 20mM PB, 150mM NaCl, pH 7.4. Normally 5 % - 8 % trehalose, mannitol and 0.01% Tween80 are added as protectants before lyophilization. Please refer to the specific buffer information in the printed ma |
| Reconstitution | Please refer to the printed manual for detailed information. |

Data



> 95 % as determined by reducing SDS-PAGE.

Background

CD14 is a cell surface glycoprotein that is preferentially expressed on monocytes/macrophages. CD14 is anchored to cells by linkage to glycosylphosphatidylinositol (GPI) and functions as a pattern recognition receptor that binds lipopolysaccharides (LPS) and a variety of ligands derived from different microbial sources. The binding of CD14 with LPS is catalyzed by LPS binding protein (LBP). Toll like receptors have also been implicated in the transduction of CD14-LPS signals. Soluble CD14 can be released from the cell surface by phosphatidylinositol-specific phospholipase C and has been detected in serum and body fluids. High concentrations of soluble CD14 have been shown to inhibit LPS mediated responses. However, soluble CD14 can also potentiate LPS response in cells that do not express cell surface

For Research Use Only

A Reliable Research Partner in Life Science and Medicine

Toll-free: 1-888-852-8623

Web: www.elabscience.com

Tel: 1-832-243-6086

Email: techsupport@elabscience.com

Fax: 1-832-243-6017

Recombinant Human CD14 Protein (His Tag)

Catalog Number:PKSH032203



CD14.

For Research Use Only

A Reliable Research Partner in Life Science and Medicine

Toll-free: 1-888-852-8623

Tel: 1-832-243-6086

Fax: 1-832-243-6017

Web: www.elabscience.com

Email: techsupport@elabscience.com