

Recombinant Phospho-IGF1R (Tyr1135/1136)/Phospho-Insulin Receptor β (Tyr1150/1151) Monoclonal Antibody

catalog number: AN301299L

Note: Centrifuge before opening to ensure complete recovery of vial contents.

Description

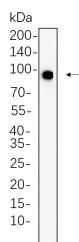
Reactivity	Human;Mouse;Rat
Immunogen	A synthetic peptide corresponding to residues around (Tyr1135/1136)/(Tyr1150/1151) of Human Phospho-IGF1R/Phospho-Insulin Receptor β
Host	Rabbit
Isotype	IgG,k
Clone	5C10
Purification	Protein A
Buffer	PBS, 50% glycerol, 0.05% Proclin 300, 0.05% protein protectant.

Applications

Recommended Dilution

WB	1:2000-1:10000
-----------	----------------

Data



Western Blot with Recombinant Phospho-IGF1R (Tyr1135/1136)/Phospho-Insulin Receptor β (Tyr1150/1151) Monoclonal Antibody at dilution of 1:1000 dilution. Lane A:

NIH-3T3 whole cell lysate.

Observed-MW:95 kDa

Calculated-MW:156 kDa

Preparation & Storage

Storage	Store at -20°C Valid for 12 months. Avoid freeze / thaw cycles.
Shipping	Ice bag

Background

This receptor binds insulin-like growth factor with a high affinity. It has tyrosine kinase activity. The insulin-like growth factor I receptor plays a critical role in transformation events. Cleavage of the precursor generates alpha and beta subunits. It is highly overexpressed in most malignant tissues where it functions as an anti-apoptotic agent by enhancing cell survival. Alternatively spliced transcript variants encoding distinct isoforms have been found for this gene.

For Research Use Only