

## Recombinant Rat CD80/B7-1 Protein (His Tag)

Catalog Number: PKSR030453

**Note:** Centrifuge before opening to ensure complete recovery of vial contents.

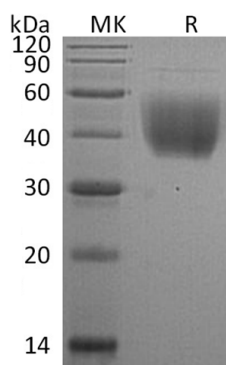
### Description

<b>Species</b>	Rat
<b>Source</b>	HEK293 Cells-derived Rat CD80/B7-1 protein V1a30-Gln248, with an C-terminal His
<b>Calculated MW</b>	25.7 kDa
<b>Observed MW</b>	38-60 kDa
<b>Accession</b>	O35187
<b>Bio-activity</b>	Not validated for activity

### Properties

<b>Purity</b>	> 95 % as determined by reducing SDS-PAGE.
<b>Endotoxin</b>	< 1.0 EU per µg of the protein as determined by the LAL method.
<b>Storage</b>	Generally, lyophilized proteins are stable for up to 12 months when stored at -20 to -80 °C. Reconstituted protein solution can be stored at 4-8°C for 2-7 days. Aliquots of reconstituted samples are stable at < -20°C for 3 months.
<b>Shipping</b>	This product is provided as lyophilized powder which is shipped with ice packs.
<b>Formulation</b>	Lyophilized from a 0.2 µm filtered solution of 20mM PB, 6% Trehalose, 4% Mannitol, 0.05% Tween 80, pH7.0. Normally 5% - 8% trehalose, mannitol and 0.01% Tween 80 are added as protectants before lyophilization. Please refer to the specific buffer information in the printed manual.
<b>Reconstitution</b>	Please refer to the printed manual for detailed information.

### Data



> 95 % as determined by reducing SDS-PAGE.

### Background

Cluster of Differentiation 80, also called B7-1, is a member of cell surface immunoglobulin superfamily which plays key, yet distinct roles in the activation of T cells. B7-1/CD80 and B7-2/CD86, together with their receptors CD28 and CTLA4, constitute one of the dominant co-stimulatory pathways that regulate T- and B- cell responses. CD80 is mostly expressed on the surface of antigen-presenting cells including activated B cells, macrophages and dendritic cells. Although both CTLA-4 and CD28 can bind to the same ligands, CTLA-4 binds to B7-1 and B7-2 with a 20-100 fold higher affinity than CD28 and is involved in the down-regulation of the immune response.

### For Research Use Only