

Recombinant Human SLAMF3/CD229 Protein (His Tag)

Catalog Number: PKSH033121

Note: Centrifuge before opening to ensure complete recovery of vial contents.

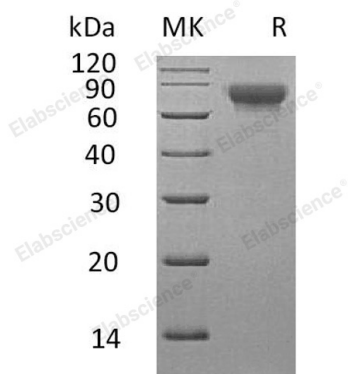
Description

Species	Human
Source	HEK293 Cells-derived Human SLAMF3/CD229 protein Lys48-Lys454, with an C-terminal His
Calculated MW	45.6 kDa
Observed MW	75 kDa
Accession	Q9HBG7
Bio-activity	Not validated for activity

Properties

Purity	> 95 % as determined by reducing SDS-PAGE.
Endotoxin	< 1.0 EU per µg of the protein as determined by the LAL method.
Storage	Generally, lyophilized proteins are stable for up to 12 months when stored at -20 to -80 °C. Reconstituted protein solution can be stored at 4-8°C for 2-7 days. Aliquots of reconstituted samples are stable at < -20°C for 3 months.
Shipping	This product is provided as lyophilized powder which is shipped with ice packs.
Formulation	Lyophilized from a 0.2 µm filtered solution of PBS, pH 7.4. Normally 5% - 8% trehalose, mannitol and 0.01% Tween 80 are added as protectants before lyophilization. Please refer to the specific buffer information in the printed manual.
Reconstitution	Please refer to the printed manual for detailed information.

Data



> 95 % as determined by reducing SDS-PAGE.

Background

SLAMF3 (CD229) is a type I transmembrane glycoprotein in the SLAM subgroup of the CD2 family. Mature human SLAMF3 consists of a 407 amino acid (aa) extracellular domain (ECD) with two Ig-like V-set and two Ig-like truncated C2-set domains. The ECD of human SLAMF3 shares 57% - 59% aa sequence identity with mouse and rat SLAMF3. Within the first two Ig-like domains that are common to all SLAM proteins, human SLAMF3 shares 24% - 39% aa sequence identity with human 2B4, BLAME, CD2F-10, CD84, CRACC, NTB-A, and SLAM. It is expressed on T and B cells, thymocytes, and more weakly on NK cells. It may participate in adhesion reactions between T lymphocytes and accessory cells by homophilic interaction. Promotes T-cell differentiation into a helper T-cell Th17 phenotype leading to increased IL-17 secretion; the costimulatory activity requires SH2D1A. SLAMF3 may be involved in the maintenance of peripheral cell tolerance by serving as a negative regulator of the immune response. It also disable autoantibody responses and inhibit IFN-gamma secretion by CD4+ T-cells and negatively regulate the size of thymic innate CD8+ T-cells and the development of invariant natural killer T (iNKT) cells.