

PE Anti-Human CD21 Antibody[HI21a]

Catalog Number: E-AB-F1320D

Note: Centrifuge before opening to ensure complete recovery of vial contents.

Description

| | |
|--------------------------------|---|
| Reactivity | Human |
| Host | Mouse |
| Isotype | Mouse IgG2a, κ |
| Clone No. | HI21a |
| Isotype Control | PE Mouse IgG2a, κ Isotype Control[C1.18.4] [Product E-AB-F09802D] |
| Conjugation | PE |
| Conjugation Information | PE is designed to be excited by the Blue (488 nm), Green (532 nm) and Yellow-Green (561 nm) lasers and detected using an optical filter centered near 575 nm (e.g., a 585/42 nm bandpass filter). |
| Storage Buffer | Phosphate buffered solution, pH 7.2, containing 0.09% sodium azide and 1% BSA. |

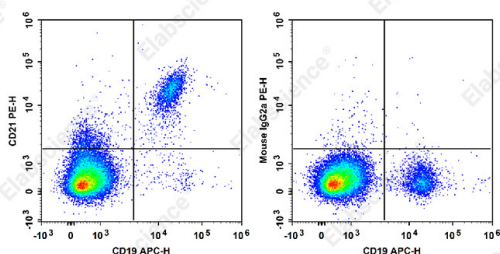
Applications

FCM

Recommended usage

Each lot of this antibody is quality control tested by flow cytometric analysis. **The amount of the reagent is suggested to be used 5 μL of antibody per test (million cells in 100 μL staining volume or per 100 μL of whole blood).** Please check your vial before the experiment. Since applications vary, the appropriate dilutions must be determined for individual use.

Data



Human peripheral blood lymphocytes are stained with APC Anti-Human CD19 Antibody and PE Anti-Human CD21 Antibody[HI21a] (Left). Lymphocytes are stained with APC Anti-Human CD19 Antibody and PE Mouse IgG2a, κ Isotype Control (Right).

Preparation & Storage

| | |
|-----------------|---|
| Storage | Keep as concentrated solution. This product can be stored at 2-8°C for 12 months. Please protected from prolonged exposure to light and do not freeze. |
| Shipping | Ice bag |

Antigen Information

| | |
|------------------------|---|
| Alternate Names | CD21;CR2;Complement C3d receptor;Complement receptor type 2;Cr2;EBV receptor; Epstein-Barr virus receptor |
|------------------------|---|

For Research Use Only

Uniprot ID

P20023

Gene ID

1380

Background

CD21 is a 145 kD transmembrane protein also known as complement C3d receptor (C3dR), complement receptor 2 (CR2), and Epstein-Barr virus receptor. CD21 is expressed on B cells, follicular dendritic cells, subsets of normal thymocytes and T cells, and some epithelial cells. CD21 is the receptor used by Epstein-Barr virus to infect B cells and is also the complement receptor for C3d. CD21 has also been shown to interact with a number of proteins, including CD23, CD19, annexin VI, CD81, iC3b, complement receptor 1 (CR1, CD35), and interferon-alpha 1 (IFN- α 1).