

PerCP/Cyanine5.5 Anti-Human IgM Antibody[MHM-88]

Catalog Number: E-AB-F1172J

Note: Centrifuge before opening to ensure complete recovery of vial contents.

Description

Reactivity	Human
Host	Mouse
Isotype	Mouse IgG1, κ
Clone No.	MHM-88
Isotype Control	PerCP/Cyanine5.5 Mouse IgG1, κ Isotype Control[MOPC-21] [Product E-AB-F09792J]
Conjugation	PerCP/Cyanine 5.5
Conjugation Information	PerCP/Cyanine5.5 is designed to be excited by the blue laser (488 nm) and detected using an optical filter centered near 675 nm (e.g., a 690/50 nm bandpass filter).
Storage Buffer	Phosphate buffered solution, pH 7.2, containing 0.09% sodium azide and 1% BSA.

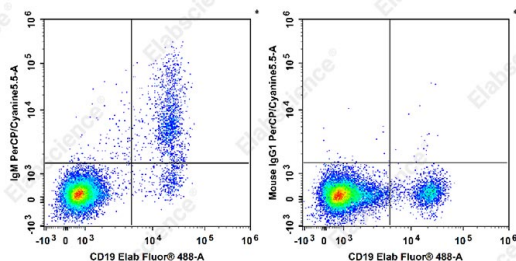
Applications

Recommended usage

FCM

Each lot of this antibody is quality control tested by flow cytometric analysis. **The amount of the reagent is suggested to be used 5 μL of antibody per test (million cells in 100 μL staining volume or per 100 μL of whole blood).** Please check your vial before the experiment. Since applications vary, the appropriate dilutions must be determined for individual use.

Data



Overnight cultured human peripheral blood lymphocytes are stained with Elab Fluor® 488 Anti-Human CD19 Antibody and PerCP/Cyanine5.5 Anti-Human IgM Antibody[MHM-88]

(Left). lymphocytes are stained with Elab Fluor® 488 Anti-Human CD19 Antibody and PerCP/Cy5.5 Mouse IgG1, κ Isotype Control (Right).

Preparation & Storage

Storage	Keep as concentrated solution. This product can be stored at 2-8°C for 12 months. Please protected from prolonged exposure to light and do not freeze.
Shipping	Ice bag

Antigen Information

Alternate Names	IGHM;Immunoglobulin M;Immunoglobulin heavy constant mu
Uniprot ID	P01871

For Research Use Only

Gene ID

3507

Background

IgM is the first immunoglobulin made by B cells in the immune response. Surface IgM is expressed on immature and mature B cells, while IgM heavy (μ) chain is expressed intracellularly in pre-B cells.