

# LRG1 Polyclonal Antibody

Catalog Number:E-AB-52903



**Note:** Centrifuge before opening to ensure complete recovery of vial contents.

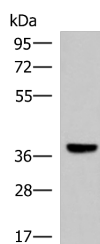
## Description

<b>Reactivity</b>	Human, Mouse
<b>Immunogen</b>	Fusion protein of human LRG1
<b>Host</b>	Rabbit
<b>Isotype</b>	IgG
<b>Purification</b>	Antigen affinity purification
<b>Conjugation</b>	Unconjugated
<b>Formulation</b>	PBS with 0.05% NaN3 and 40% Glycerol,pH7.4

## Applications Recommended Dilution

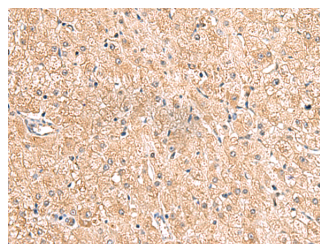
<b>WB</b>	1:1000-1:5000
<b>IHC</b>	1:50-1:300
<b>ELISA</b>	1:5000-1:10000

## Data



Western blot analysis of Mouse liver tissue lysate using LRG1 Polyclonal Antibody at dilution of 1:1000

**Observed Mw:Refer to figures**  
**Calculated Mw:38 kDa**



Immunohistochemistry of paraffin-embedded Human liver cancer tissue using LRG1 Polyclonal Antibody at dilution of 1:80(x200)

## Preparation & Storage

**Storage** Store at -20°C. Avoid freeze / thaw cycles.

## Background

The leucine-rich repeat (LRR) family of proteins, including LRG1, have been shown to be involved in protein-protein interaction, signal transduction, and cell adhesion and development. LRG1 is expressed during granulocyte differentiation.

## For Research Use Only

A Reliable Research Partner in Life Science and Medicine

Toll-free: 1-888-852-8623

Web: [www.elabscience.com](http://www.elabscience.com)

Tel: 1-832-243-6086

Email: [techsupport@elabscience.com](mailto:techsupport@elabscience.com)

Fax: 1-832-243-6017