

KSR1 Polyclonal Antibody

Catalog Number: E-AB-65205



Note: Centrifuge before opening to ensure complete recovery of vial contents.

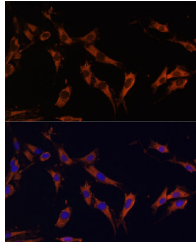
Description

Reactivity	Human, Mouse, Rat
Immunogen	Recombinant fusion protein of human KSR1 (NP_055053.1).
Host	Rabbit
Isotype	IgG
Purification	Affinity purification
Conjugation	Unconjugated
Formulation	PBS with 0.02% sodium azide, 50% glycerol, pH7.3.

Applications Recommended Dilution

IF	1:50-1:100
-----------	------------

Data



Immunofluorescence analysis of C6 cells using KSR1 Polyclonal Antibody at dilution of 1:100 (40x lens).
Blue: DAPI for nuclear staining.

Preparation & Storage

Storage Store at -20°C. Avoid freeze / thaw cycles.

Background

KSR1 (Kinase Suppressor Of Ras 1) is a Protein Coding gene. Among its related pathways are Negative regulation of MAPK pathway and RET signaling. Gene Ontology (GO) annotations related to this gene include transferase activity, transferring phosphorus-containing groups and protein tyrosine kinase activity. An important paralog of this gene is KSR2.

For Research Use Only

A Reliable Research Partner in Life Science and Medicine

Toll-free: 1-888-852-8623

Web: www.elabscience.com

Tel: 1-832-243-6086

Email: techsupport@elabscience.com

Fax: 1-832-243-6017