

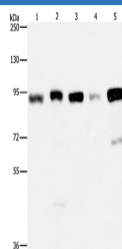
IMMT Polyclonal Antibody

catalog number: E-AB-10395

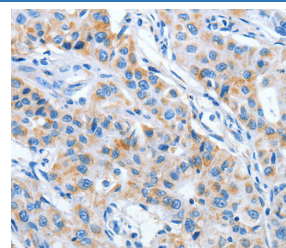
Note: Centrifuge before opening to ensure complete recovery of vial contents.

Description	
Reactivity	Human;Mouse
Immunogen	Recombinant protein of human IMMT
Host	Rabbit
Isotype	IgG
Purification	Affinity purification
Conjugation	Unconjugated
Buffer	Phosphate buffered solution, pH 7.4, containing 0.05% stabilizer and 50% glycerol.
Applications	Recommended Dilution
WB	1:500-1:2000
IHC	1:50-1:200

Data

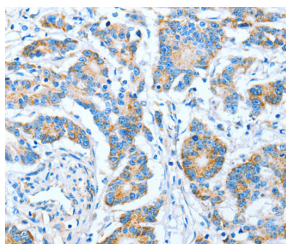


Western Blot analysis of Raji and 231 cell, hepG2、hela and 293T cell using IMMT Polyclonal Antibody at dilution of 1:270



Immunohistochemistry of paraffin-embedded Human lung cancer using IMMT Polyclonal Antibody at dilution of 1:70

Calculated-MW:84 kDa



Immunohistochemistry of paraffin-embedded Human colon cancer using IMMT Polyclonal Antibody at dilution of 1:70

Preparation & Storage

Storage	Store at -20°C Valid for 12 months. Avoid freeze / thaw cycles.
Shipping	The product is shipped with ice pack, upon receipt, store it immediately at the temperature recommended.

Background

Mitochondrial inner membrane protein is a protein that in humans is encoded by the IMMT gene. IMMT has been shown to interact with BAT2. The mitochondrial inner membrane (IM) serves as the site for ATP production by hosting the oxidative phosphorylation complex machinery most notably on the crista membranes. Disruption of the crista structure has been implicated in a variety of cardiovascular and neurodegenerative diseases.

For Research Use Only