

Recombinant Human Chitotriosidase/CHIT1 Protein (His Tag)

Catalog Number: PKSH032245

Note: Centrifuge before opening to ensure complete recovery of vial contents.

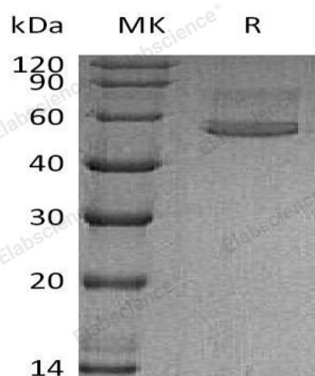
Description

Species	Human
Source	HEK293 Cells-derived Human Chitotriosidase;CHIT1 protein Ala22-Asn466, with an C-terminal His
Calculated MW	50.4 kDa
Observed MW	54 kDa
Accession	AAI03696.1
Bio-activity	Not validated for activity

Properties

Purity	> 95 % as determined by reducing SDS-PAGE.
Concentration	Subject to label value.
Endotoxin	< 1.0 EU per µg of the protein as determined by the LAL method.
Storage	Store at < -20°C, stable for 6 months. Please minimize freeze-thaw cycles.
Shipping	This product is provided as liquid. It is shipped at frozen temperature with blue ice/gel packs. Upon receipt, store it immediately at < - 20°C.
Formulation	Supplied as a 0.2 µm filtered solution of 20mM Tris-HCl, 150mM NaCl, pH 7.5.

Data



> 95 % as determined by reducing SDS-PAGE.

Background

Chitotriosidase-1 (CHIT1) is a glycoprotein that belongs to the Glycosyl Hydrolase 18 family and Chitinase class II subfamily. It is secreted by cultured macrophages and serves to degrade chitin, chitotriose and chitobiose. CHIT1 may participate in the defense against nematodes and other pathogens. It is highly expressed in the plasma of patients with Gaucher's disease type I, which can be used as diagnostic aid and to evaluate the success of treatment that brings levels back to normal. The amino acid sequence of human CHIT1 is 99%, 76%, 75% and 55% identical to that of chimpanzee, rat, mouse and fruit fly, respectively.

For Research Use Only

Toll-free: 1-888-852-8623
Web: www.elabscience.com

Tel: 1-832-243-6086
Email: techsupport@elabscience.com

Fax: 1-832-243-6017