

Recombinant Human SULT2B1 Protein (His Tag)

Catalog Number: PKSH033369

Note: Centrifuge before opening to ensure complete recovery of vial contents.

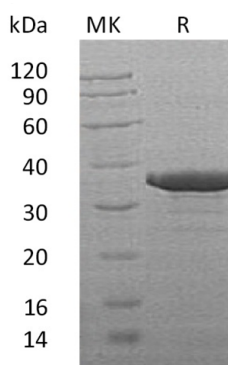
Description

Species	Human
Source	E.coli-derived Human SULT2B1 protein Met 1-Glu311, with an C-terminal His
Calculated MW	36.6 kDa
Observed MW	35 kDa
Accession	O00204
Bio-activity	Not validated for activity

Properties

Purity	> 85 % as determined by reducing SDS-PAGE.
Concentration	Subject to label value.
Endotoxin	< 1.0 EU per µg of the protein as determined by the LAL method.
Storage	Store at < -20°C, stable for 6 months. Please minimize freeze-thaw cycles.
Shipping	This product is provided as liquid. It is shipped at frozen temperature with blue ice/gel packs. Upon receipt, store it immediately at < -20°C.
Formulation	Supplied as a 0.2 µm filtered solution of 20mM Tris-HCl, 100mM NaCl, 1mM EDTA, pH 8.0.

Data



> 85 % as determined by reducing SDS-PAGE.

Background

Sulfotransferase Family Cytosolic 2B Member 1(SULT2B1) is a member of the Sulfotransferase 1 family. SULT2B1 is highly expressed in the placenta; prostate; and trachea with lower expression levels in the small intestine and lung. SULT2B1 catalyzes the sulfate conjugation of numerous hormones; neurotransmitters; drugs; and xenobiotic compounds. Sulfonation enhances the water solubility of molecules; and therefore their renal excretion; however SULT2B1 can also result in bioactivation to form active metabolites.

For Research Use Only