

## CAPG Polyclonal Antibody

catalog number: **E-AB-10720**

**Note:** Centrifuge before opening to ensure complete recovery of vial contents.

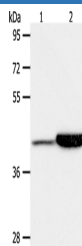
### Description

<b>Reactivity</b>	Human;Mouse;Rat
<b>Immunogen</b>	Recombinant protein of human CAPG
<b>Host</b>	Rabbit
<b>Isotype</b>	IgG
<b>Purification</b>	Affinity purification
<b>Buffer</b>	Phosphate buffered solution, pH 7.4, containing 0.05% stabilizer and 50% glycerol.

### Applications

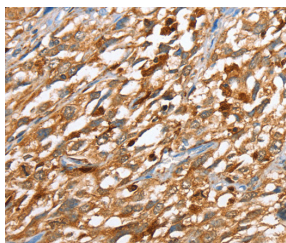
Applications	Recommended Dilution
<b>WB</b>	1:1000-1:5000
<b>IHC</b>	1:50-1:200

### Data

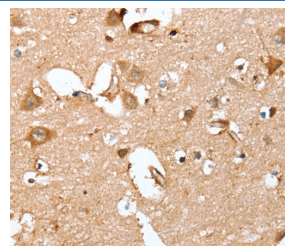


Western Blot analysis of Jurkat and RAW264.7 cell using CAPG Polyclonal Antibody at dilution of 1:950

**Calculated-MW:38 kDa**



Immunohistochemistry of paraffin-embedded Human esophagus cancer using CAPG Polyclonal Antibody at dilution of 1:40



Immunohistochemistry of paraffin-embedded Human brain using CAPG Polyclonal Antibody at dilution of 1:40

### Preparation & Storage

<b>Storage</b>	Store at -20°C Valid for 12 months. Avoid freeze / thaw cycles.
<b>Shipping</b>	The product is shipped with ice pack, upon receipt, store it immediately at the temperature recommended.

### Background

This gene encodes a member of the gelsolin/villin family of actin-regulatory proteins. The encoded protein reversibly blocks the barbed ends of F-actin filaments in a Ca<sup>2+</sup> and phosphoinositide-regulated manner, but does not sever preformed actin filaments. By capping the barbed ends of actin filaments, the encoded protein contributes to the control of actin-based motility in non-muscle cells. Alternatively spliced transcript variants have been observed for this gene.

### For Research Use Only