

PE/Cyanine 5 Anti-Mouse CD44 Antibody[NIM-R8]

Catalog Number: AN00917G

Note: Centrifuge before opening to ensure complete recovery of vial contents.

Description

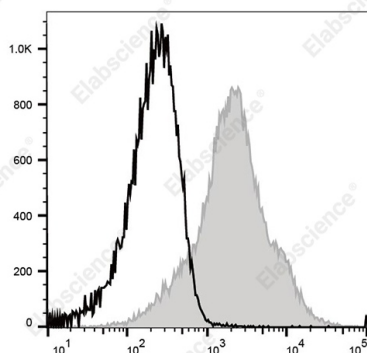
Reactivity	Mouse
Host	Rat
Isotype	Rat IgG2a
Clone No.	NIM-R8
Isotype Control	PE/Cyanine5 Rat IgG2a, κ Isotype Control[2A3] [Product E-AB-F09832G]
Conjugation	PE/Cyanine 5
Conjugation Information	PE/Cyanine 5 is designed to be excited by the Blue (488 nm), Green (532 nm) and yellow-green (561 nm) lasers and detected using an optical filter centered near 670 nm (e.g., a 690/50 nm bandpass filter).
Storage Buffer	Phosphate buffered solution, pH 7.2, containing 0.09% stabilizer.

Applications

Recommended usage

FCM	Each lot of this antibody is quality control tested by flow cytometric analysis. The amount of the reagent is suggested to be used 5 μL of antibody per test (million cells in 100 μL staining volume or per 100 μL of whole blood). Please check your vial before the experiment. Since applications vary, the appropriate dilutions must be determined for individual use.
------------	---

Data



Staining of C57BL/6 murine splenocytes cells with PE/Cyanine 5 Anti-Mouse CD44 Antibody[NIM-R8] (filled gray histogram) or PE/Cyanine 5 Rat IgG2a, κ Isotype Control (empty black histogram). Total viable cells were used for analysis.

Preparation & Storage

Storage	Keep as concentrated solution. This product can be stored at 2-8°C for 24 months. Please protected from prolonged exposure to light and do not freeze.
Shipping	Ice bag

Antigen Information

Alternate Names	Hermes;Pgp-1;H-CAM;HUTCH-1;ECMR III;gp85;Ly-24
Uniprot ID	P15379

For Research Use Only

Gene ID

12505

Background

CD44 is a 80-95 kD glycoprotein also known as Hermes, Pgp1, H-CAM, or HUTCH. It is expressed on all leukocytes, endothelial cells, hepatocytes, and mesenchymal cells. As B and T cells become activated or progress to the memory stage, CD44 expression increases from low or mid levels to high levels. Thus, CD44 has been reported to be a valuable marker for memory cell subsets. High CD44 expression on Treg cells has been associated with potent suppressive function via high production of IL-10. CD44 is an adhesion molecule involved in leukocyte attachment to and rolling on endothelial cells, homing to peripheral lymphoid organs and to the sites of inflammation, and leukocyte aggregation.