

ARHGDIB Polyclonal Antibody

catalog number: E-AB-53461

Note: Centrifuge before opening to ensure complete recovery of vial contents.

Description

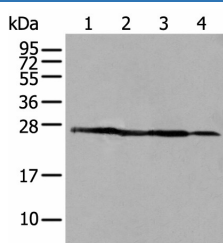
Reactivity	Human;Mouse
Immunogen	Synthetic peptide of human ARHGDIB
Host	Rabbit
Isotype	IgG
Purification	Antigen affinity purification
Conjugation	Unconjugated
buffer	Phosphate buffered solution, pH 7.4, containing 0.05% stabilizer and 50% glycerol.

Applications

Recommended Dilution

WB	1:500-1:2000
IHC	1:25-1:100

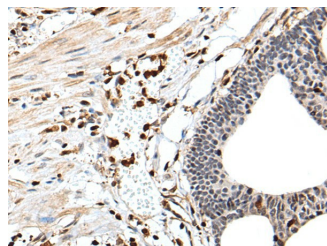
Data



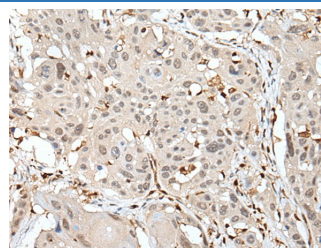
Western blot analysis of 293T A431 and HepG2 cell lysates using ARHGDIB Polyclonal Antibody at dilution of 1:500

Observed-MV: Refer to figures

Calculated-MV: 23 kDa



Immunohistochemistry of paraffin-embedded Human gastric cancer tissue using ARHGDIB Polyclonal Antibody at dilution of 1:35(×200)



Immunohistochemistry of paraffin-embedded Human esophagus cancer tissue using ARHGDIB Polyclonal Antibody at dilution of 1:35(×200)

Preparation & Storage

Storage	Store at -20°C Valid for 12 months. Avoid freeze / thaw cycles.
Shipping	The product is shipped with ice pack, upon receipt, store it immediately at the temperature recommended.

Background

For Research Use Only

ARHGDIB Polyclonal Antibody

catalog number: E-AB-53461



ARHGDIB, also known as RhoGDI2, is a conserved member of the RhoGDI family and plays an important role in cell migrations. It regulates the GDP/GTP exchange reaction of the Rho proteins by inhibiting the dissociation of GDP from them, and the subsequent binding of GTP to them.

It is mainly in hematopoietic, endothelial, and epithelial cells. It has been linked to tumorigenesis and metastasis.

RhoGDI2 expression is downregulated in several cancer types, such as bladder, lung and lymphoma, but is upregulated in prostate and gastric cancer.

For Research Use Only

A Reliable Research Partner in Life Science and Medicine
Tel: 400-999-2100

Email: techsupport@elabscience.cn

Web: www.elabscience.cn

Rev. V1.7