

# SLC6A19 Polyclonal Antibody

Catalog Number: E-AB-17438



**Note:** Centrifuge before opening to ensure complete recovery of vial contents.

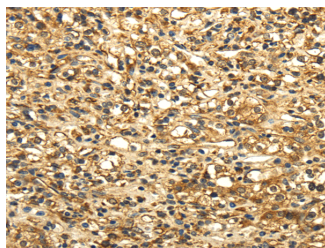
## Description

|                     |   |
|---------------------|---|
| <b>Reactivity</b>   | Human   |
| <b>Immunogen</b>    | Synthetic peptide of human SLC6A19                  |
| <b>Host</b>         | Rabbit  |
| <b>Isotype</b>      | IgG   |
| <b>Purification</b> | Affinity purification                               |
| <b>Conjugation</b>  | Unconjugated  |
| <b>Formulation</b>  | PBS with 0.05% sodium azide and 50% glycerol, PH7.4 |

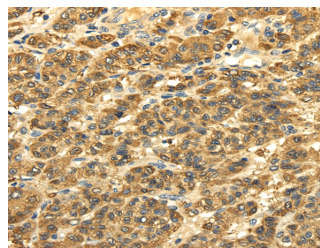
## Applications Recommended Dilution

|              |              |
|--------------|--------------|
| <b>IHC</b>   | 1:30-150     |
| <b>ELISA</b> | 1:2000-10000 |

## Data



Immunohistochemistry of paraffin-embedded Human prostate cancer tissue using SLC6A19 Polyclonal Antibody at dilution 1:35



Immunohistochemistry of paraffin-embedded Human liver cancer tissue using SLC6A19 Polyclonal Antibody at dilution 1:35

## Preparation & Storage

**Storage** Store at -20°C. Avoid freeze / thaw cycles.

## Background

This gene encodes a system B(0) transmembrane protein that actively transports most neutral amino acids across the apical membrane of epithelial cells. Mutations in this gene result in Hartnup disorder.

## For Research Use Only

A Reliable Research Partner in Life Science and Medicine

Toll-free: 1-888-852-8623

Web: [www.elabscience.com](http://www.elabscience.com)

Tel: 1-832-243-6086

Email: [techsupport@elabscience.com](mailto:techsupport@elabscience.com)

Fax: 1-832-243-6017