

## Recombinant Human UBE2V2/DDVIT1 Protein (His Tag)

**Catalog Number:** PKSH033191

**Note:** Centrifuge before opening to ensure complete recovery of vial contents.

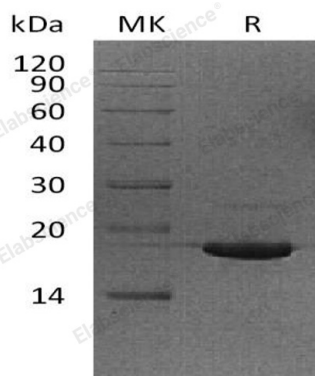
### Description

|                      |   |
|----------------------|---|
| <b>Species</b>       | Human   |
| <b>Source</b>        | E.coli-derived Human UBE2V2/DDVIT1 protein Met 1-Asn145, with an N-terminal His |
| <b>Calculated MW</b> | 18.5 kDa  |
| <b>Observed MW</b>   | 18 kDa  |
| <b>Accession</b>     | Q15819  |
| <b>Bio-activity</b>  | Not validated for activity  |

### Properties

|                      |   |
|----------------------|---|
| <b>Purity</b>        | > 95 % as determined by reducing SDS-PAGE.  |
| <b>Concentration</b> | Subject to label value.   |
| <b>Endotoxin</b>     | < 1.0 EU per µg of the protein as determined by the LAL method.   |
| <b>Storage</b>       | Store at < -20°C, stable for 6 months. Please minimize freeze-thaw cycles.  |
| <b>Shipping</b>      | This product is provided as liquid. It is shipped at frozen temperature with blue ice/gel packs. Upon receipt, store it immediately at < -20°C. |
| <b>Formulation</b>   | Supplied as a 0.2 µm filtered solution of 50mm HEPES, 150mM NaCl, pH 7.0.   |

### Data



> 95 % as determined by reducing SDS-PAGE.

### Background

Ubiquitin-Conjugating Enzyme E2 Variant 2 (UBE2V2) is an enzyme that belongs to the ubiquitin-conjugating enzyme family. UBE2V2 can be detected in the placenta, colon, liver, and skin. It forms a heterodimer with UBE2N. The UBE2V2/UBE2N heterodimer catalyzes the synthesis of non-canonical poly-ubiquitin chains and which leads to protein degradation by the proteasome. UBE2V2 mediates transcriptional activation of target genes. It plays a role in the control of progress through the cell cycle and differentiation. It also plays a role in the error-free DNA repair pathway and contributes to the survival of cells after DNA damage.