

PE Anti-Human CD79a Antibody[HM47]

Catalog Number: E-AB-F1370D

Note: Centrifuge before opening to ensure complete recovery of vial contents.

Description

Reactivity	Human
Host	Mouse
Isotype	Mouse IgG1, κ
Clone No.	HM47
Isotype Control	PE Mouse IgG1, κ Isotype Control[MOPC-21] [Product E-AB-F09792D]
Conjugation	PE
Conjugation Information	PE is designed to be excited by the Blue (488 nm), Green (532 nm) and Yellow-Green (561 nm) lasers and detected using an optical filter centered near 575 nm (e.g., a 585/42 nm bandpass filter).
Storage Buffer	Phosphate buffered solution, pH 7.2, containing 0.09% sodium azide and 1% BSA.

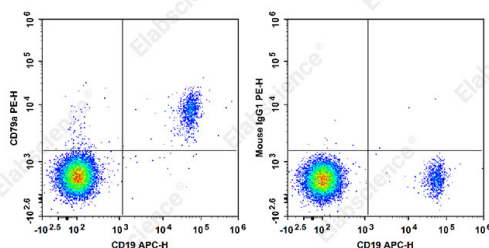
Applications

FCM

Recommended usage

Each lot of this antibody is quality control tested by flow cytometric analysis. **The amount of the reagent is suggested to be used 5 μL of antibody per test (million cells in 100 μL staining volume or per 100 μL of whole blood).** Please check your vial before the experiment. Since applications vary, the appropriate dilutions must be determined for individual use.

Data



Staining of normal human peripheral blood cells with APC Anti-Human CD19 Antibody and PE Anti-Human CD79a Antibody[HM47] (left) or PE Mouse IgG1, κ Isotype Control (right). Cells in the lymphocytes gate were used for analysis.

Preparation & Storage

Storage	Keep as concentrated solution. This product can be stored at 2-8°C for 12 months. Please protected from prolonged exposure to light and do not freeze.
Shipping	Ice bag

Antigen Information

Alternate Names	CD79;Iga;Mb-1
Uniprot ID	P11912
Gene ID	973

For Research Use Only

Background

CD79a is a 47 kD type I integral membrane protein, also known as mb-1 or Iga. It is a member of the Ig superfamily and disulphide-associated with CD79b (B29). The interaction of CD79a/CD79b heterodimer with B cell surface Ig forms B cell antigen receptor complex. CD79a is expressed in B cells from early pre-B to plasma cell stage. It has been shown that CD79a is also weakly expressed in some precursors of T- and myeloid cells. CD79 mediates the transport of IgM to B cell surface and transduces signals initiated by BCR aggregation.