

# CBX5 Monoclonal Antibody

Catalog Number:E-AB-22146

**Note:** Centrifuge before opening to ensure complete recovery of vial contents.

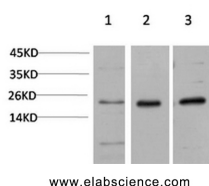
## Description

<b>Reactivity</b>	Human,Mouse,Rat
<b>Immunogen</b>	Recombinant Protein of HP-1 $\alpha$
<b>Host</b>	Mouse
<b>Isotype</b>	IgG
<b>Clone</b>	Clone:7B6
<b>Purification</b>	Protein A purification
<b>Conjugation</b>	Unconjugated
<b>Formulation</b>	PBS with 0.02% sodium azide and 50% glycerol pH 7.4.

## Applications Recommended Dilution

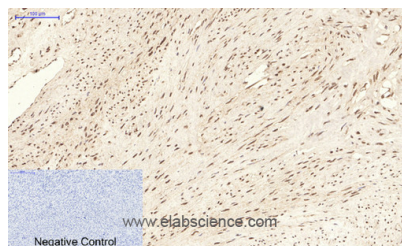
<b>WB</b>	1:500-2000
<b>IHC</b>	1:50-300

## Data

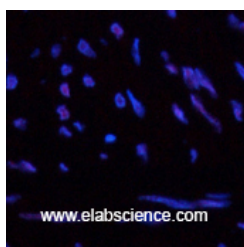


Western Blot analysis of 1) HeLa, 2) 3T3, 3) PC-12 cells using CBX5 Monoclonal Antibody at dilution of 1:1000.

**Observed Mw:22kDa**



Immunohistochemistry of paraffin-embedded Human uterus tissue using CBX5 Monoclonal Antibody at dilution of 1:200.



Immunofluorescence analysis of Human uterus tissue using CBX5 Monoclonal Antibody at dilution of 1:200.

## Preparation & Storage

**Storage** Store at -20°C. Avoid freeze / thaw cycles.

## Background

This gene encodes a highly conserved nonhistone protein, which is a member of the heterochromatin protein family. The

## For Research Use Only

A Reliable Research Partner in Life Science and Medicine

Toll-free: 1-888-852-8623

Web: [www.elabscience.com](http://www.elabscience.com)

Tel: 1-832-243-6086

Email: [techsupport@elabscience.com](mailto:techsupport@elabscience.com)

Fax: 1-832-243-6017

# CBX5 Monoclonal Antibody

Catalog Number: E-AB-22146



protein is enriched in the heterochromatin and associated with centromeres. The protein has a single N-terminal chromodomain which can bind to histone proteins via methylated lysine residues, and a C-terminal chromo shadow-domain (CSD) which is responsible for the homodimerization and interaction with a number of chromatin-associated nonhistone proteins. The encoded product is involved in the formation of functional kinetochore through interaction with essential kinetochore proteins. The gene has a pseudogene located on chromosome 3. Multiple alternatively spliced variants, encoding the same protein, have been identified.

---

## For Research Use Only

A Reliable Research Partner in Life Science and Medicine

Toll-free: 1-888-852-8623

Web: [www.elabscience.com](http://www.elabscience.com)

Tel: 1-832-243-6086

Email: [techsupport@elabscience.com](mailto:techsupport@elabscience.com)

Fax: 1-832-243-6017