

## Purified Anti-Mouse CD41 Antibody[MWReg30]

catalog number: E-AB-F1183A

**Note:** Centrifuge before opening to ensure complete recovery of vial contents.

### Description

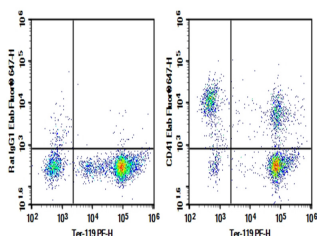
<b>Reactivity</b>	Mouse
<b>Immunogen</b>	Recombinant Mouse CD41 protein
<b>Host</b>	Rat
<b>Isotype</b>	Rat IgG1, $\kappa$
<b>Clone</b>	MWReg30
<b>Purification</b>	>98%, Protein A/G purified
<b>Buffer</b>	PBS, pH 7.2. Contains 0.05% proclin 300.

### Applications

### Recommended Dilution

<b>FCM</b>	2 $\mu$ g/mL ( $1 \times 10^5$ - $5 \times 10^5$ cells)
------------	---

### Data



C57/BL6 Mouse peripheral blood were stained with 0.2  $\mu$ g Purified Anti-Mouse CD41 Antibody[MWReg301] (Right) and 0.2  $\mu$ g Rat IgG,  $\kappa$  Isotype Control (Left), followed by Elab

Fluor® 647-conjugated Goat Anti-Rat IgG Secondary Antibody, then anti-Rat Ter-119 PE-conjugated Monoclonal Antibody.

### Preparation & Storage

<b>Storage</b>	Store at 4°C valid for 12 months or -20°C valid for long term storage, avoid freeze / thaw cycles.
<b>Shipping</b>	Ice bag

### Background

CD44 is a 80-95 kD glycoprotein also known as Hermes, Pgp1, H-CAM, or HUTCH. It is expressed on all leukocytes, endothelial cells, hepatocytes, and mesenchymal cells. As B and T cells become activated or progress to the memory stage, CD44 expression increases from low or mid levels to high levels. Thus, CD44 has been reported to be a valuable marker for memory cell subsets. High CD44 expression on Treg cells has been associated with potent suppressive function via high production of IL-10. CD44 is an adhesion molecule involved in leukocyte attachment to and rolling on endothelial cells, homing to peripheral lymphoid organs and to the sites of inflammation, and leukocyte aggregation.

### For Research Use Only