

## PE/Elab Fluor® 594 Anti-Human CD151 Antibody[50-6]

Catalog Number: AN00635P

**Note:** Centrifuge before opening to ensure complete recovery of vial contents.

### Description

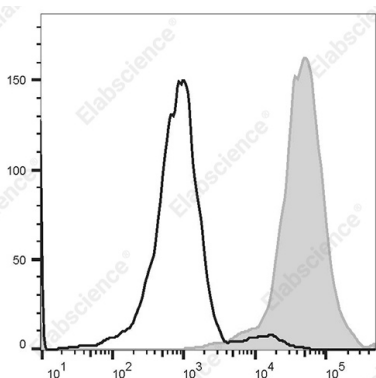
<b>Reactivity</b>	Human
<b>Host</b>	Mouse
<b>Isotype</b>	Mouse IgG1, κ
<b>Clone No.</b>	50-6
<b>Isotype Control</b>	PE/Elab Fluor® 594 Mouse IgG1, κ Isotype Control[MOPC-21] [Product E-AB-F09792P]
<b>Conjugation</b>	PE/Elab Fluor® 594
<b>Conjugation Information</b>	PE/Elab Fluor® 594 is designed to be excited by the blue (488 nm), Green (532 nm) and yellow-green (561 nm) lasers and detected using an optical filter centered near 620 nm (e.g., a 610/20 nm bandpass filter).
<b>Storage Buffer</b>	Phosphate buffered solution, pH 7.2, containing 0.09% stabilizer.

### Applications

### Recommended usage

<b>FCM</b>	Each lot of this antibody is quality control tested by flow cytometric analysis. <b>The amount of the reagent is suggested to be used 5 μL of antibody per test (million cells in 100 μL staining volume or per 100 μL of whole blood).</b> Please check your vial before the experiment. Since applications vary, the appropriate dilutions must be determined for individual use.
------------	---

### Data



Human peripheral blood platelets are stained with PE/Elab Fluor® 594 Anti-Human CD151 Antibody[50-6] (filled gray histogram) or PE/Elab Fluor® 594 Mouse IgG1, κ Isotype Control (empty black histogram).

### Preparation & Storage

<b>Storage</b>	Keep as concentrated solution. This product can be stored at 2-8°C for 24 months. Please protected from prolonged exposure to light and do not freeze.
<b>Shipping</b>	Ice bag

### Antigen Information

<b>Alternate Names</b>	Platelet-endothelial tetraspan antigen 3;GP27;Membrane glycoprotein SFA-1; Tetraspanin-24;Tspan-24;CD151
<b>Uniprot ID</b>	P48509

### For Research Use Only

**Gene ID**

977

**Background**

CD151, also known as PETA-3, is a 29 kD protein member of the tetraspanin family (TM4SF). As other members in the family, PETA-3 is composed of two extracellular loops (one larger than the other), four transmembrane domains, and two cytoplasmic tails. Also, as other members in the family, CD151 is involved in cell adhesion, migration, and tumor cell metastasis. PETA-3 is expressed by many different cell types such as immature hematopoietic cells, megakaryocytes, platelets, keratinocytes, epithelial cells, muscle cells, Schwann cells, and vascular endothelium. On the cell surface, PETA-3 associates with CD9, CD181, and the integrins  $\alpha 3\beta 1$ ,  $\alpha 5\beta 1$ , and  $\alpha 6\beta 4$ .