

## RPA3 Polyclonal Antibody

catalog number: **E-AB-64914**

**Note:** Centrifuge before opening to ensure complete recovery of vial contents.

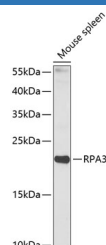
### Description

<b>Reactivity</b>	Human;Mouse;Rat
<b>Immunogen</b>	Recombinant fusion protein of human RPA3 (NP_002938.1).
<b>Host</b>	Rabbit
<b>Isotype</b>	IgG
<b>Purification</b>	Affinity purification
<b>Buffer</b>	Phosphate buffered solution, pH 7.4, containing 0.05% stabilizer and 50% glycerol.

### Applications

Applications	Recommended Dilution
<b>WB</b>	1:500-1:2000
<b>IF</b>	1:50-1:200

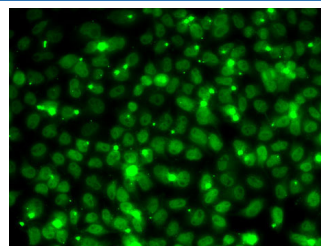
### Data



Western blot analysis of extracts of Mouse spleen using RPA3 Polyclonal Antibody at dilution of 1:1000.

**Observed-MV:19 kDa**

**Calculated-MV:13 kDa**



Immunofluorescence analysis of MCF7 cells using RPA3 Polyclonal Antibody

### Preparation & Storage

<b>Storage</b>	Store at -20°C Valid for 12 months. Avoid freeze / thaw cycles.
<b>Shipping</b>	The product is shipped with ice pack, upon receipt, store it immediately at the temperature recommended.

### Background

RPA3 (Replication Protein A3) is a Protein Coding gene. Diseases associated with RPA3 include Xeroderma Pigmentosum, Variant Type. Among its related pathways are Regulation of activated PAK-2p34 by proteasome mediated degradation and Homologous DNA Pairing and Strand Exchange. Gene Ontology (GO) annotations related to this gene include single-stranded DNA binding and damaged DNA binding.

### For Research Use Only