

# Recombinant Human KRAS4B (N-6His)

Catalog Number: PKSH033939

**Note:** Centrifuge before opening to ensure complete recovery of vial contents.

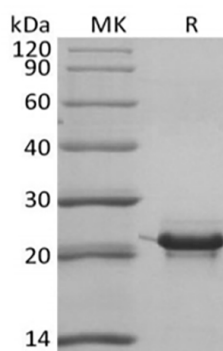
## Description

|                     |                            |
|---------------------|----------------------------|
| <b>Species</b>      | Human                      |
| <b>Mol_Mass</b>     | 21.5 kDa                   |
| <b>Accession</b>    | P01116-2                   |
| <b>Bio-activity</b> | Not validated for activity |

## Properties

|                       |  |
|-----------------------|--|
| <b>Purity</b>         | > 95 % as determined by reducing SDS-PAGE.   |
| <b>Endotoxin</b>      | < 1.0 EU per µg of the protein as determined by the LAL method.  |
| <b>Storage</b>        | Generally, lyophilized proteins are stable for up to 12 months when stored at -20 to -80 °C. Reconstituted protein solution can be stored at 4-8°C for 2-7 days. Aliquots of reconstituted samples are stable at < -20°C for 3 months.           |
| <b>Shipping</b>       | This product is provided as lyophilized powder which is shipped with ice packs.  |
| <b>Formulation</b>    | Lyophilized from a 0.2 µm filtered solution of PBS, pH 7.4.<br>Normally 5% - 8% trehalose, mannitol and 0.01% Tween 80 are added as protectants before lyophilization.<br>Please refer to the specific buffer information in the printed manual. |
| <b>Reconstitution</b> | Please refer to the printed manual for detailed information.   |

## Data



> 95 % as determined by reducing SDS-PAGE.

## Background

K-Ras belongs to the small GTPase superfamily, Ras family. As other members of the Ras family, K-Ras is a GTPase and is an early player in many signal transduction pathways. It is usually tethered to cell membranes because of the presence of an isoprenyl group on its C-terminus. K-Ras functions as a molecular on/off switch. Ras proteins bind GDP/GTP and possess intrinsic GTPase activity. Plays an important role in the regulation of cell proliferation. Plays a role in promoting oncogenic events by inducing transcriptional silencing of tumor suppressor genes (TSGs) in colorectal cancer (CRC) cells in a ZNF304-dependent manner. Besides essential function in normal tissue signaling, the mutation of a K-Ras gene is an essential step in the development of many cancers. Several germline K-Ras mutations have been found to be associated with Noonan syndrome[4] and cardio-facio-cutaneous syndrome. Somatic K-Ras mutations are found at high rates in Leukemias, colon cancer, pancreatic cancer and lung cancer.

## For Research Use Only