

## Elab Fluor® 647 Anti-Mouse Ig light chain $\lambda$ Antibody[RML-42]

**Catalog Number:** AN00654M

**Note:** Centrifuge before opening to ensure complete recovery of vial contents.

### Description

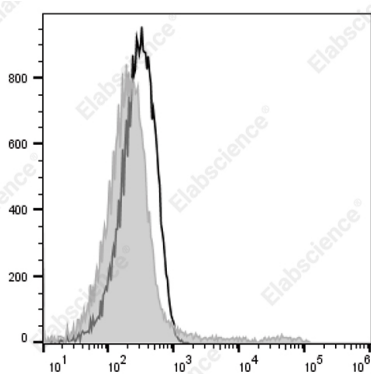
|                                |  |
|--------------------------------|--|
| <b>Reactivity</b>              | Mouse  |
| <b>Host</b>                    | Rat  |
| <b>Isotype</b>                 | Rat IgG2a, $\kappa$  |
| <b>Clone No.</b>               | RML-42   |
| <b>Isotype Control</b>         | Elab Fluor® 647 Rat IgG2a, $\kappa$ Isotype Control[2A3] [Product E-AB-F09832M]  |
| <b>Conjugation</b>             | Elab Fluor® 647  |
| <b>Conjugation Information</b> | Elab Fluor® 647 is designed to be excited by the Red laser (627-640 nm) and detected using an optical filter centered near 670 nm (e.g., a 660/20 nm bandpass filter). |
| <b>Storage Buffer</b>          | Phosphate buffered solution, pH 7.2, containing 0.09% stabilizer.  |

### Applications

### Recommended usage

|            |  |
|------------|--|
| <b>FCM</b> | Each lot of this antibody is quality control tested by flow cytometric analysis. <b>The amount of the reagent is suggested to be used 5 <math>\mu</math>L of antibody per test (million cells in 100 <math>\mu</math>L staining volume or per 100 <math>\mu</math>L of whole blood).</b> Please check your vial before the experiment. Since applications vary, the appropriate dilutions must be determined for individual use. |
|------------|--|

### Data



Staining of C57BL/6 murine splenocytes cells with Elab Fluor

® 647 Anti-Mouse Ig light chain  $\lambda$  Antibody[RML-42] (filled gray histogram) or PE/Cyanine5 Rat IgG2a,  $\kappa$  Isotype Control (empty black histogram). Total viable cells were used for analysis.

### Preparation & Storage

|                 |   |
|-----------------|---|
| <b>Storage</b>  | Keep as concentrated solution.<br>This product can be stored at 2-8°C for 12 months. Please protected from prolonged exposure to light and do not freeze. |
| <b>Shipping</b> | Ice bag   |

### Antigen Information

|                        |  |
|------------------------|--|
| <b>Alternate Names</b> | Imunoglobulin light chain lambda;AN00654 |
| <b>Uniprot ID</b>      | \  |
| <b>Gene ID</b>         | 111519                                   |

### For Research Use Only

Toll-free: 1-888-852-8623  
Web: [www.elabscience.com](http://www.elabscience.com)

Tel: 1-832-243-6086  
Email: [techsupport@elabscience.com](mailto:techsupport@elabscience.com)

Fax: 1-832-243-6017

Rev. V1.2

**Background**

The RML-42 monoclonal antibody reacts with immunoglobulin light chain lambda in all tested mouse haplotype (Igh-a and b). It does not react with kappa chain. The RML-42 monoclonal antibody may be used as primary or secondary reagent for ELISA or immunofluorescent analysis.