

# Recombinant Human Cardiotrophin-1/CTF1 Protein (His Tag)



Catalog Number:PKSH032175

**Note:** Centrifuge before opening to ensure complete recovery of vial contents.

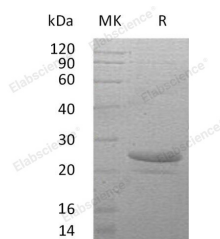
## Description

<b>Synonyms</b>	Cardiotrophin-1;CT-1;CTF1;
<b>Species</b>	Human
<b>Expression Host</b>	E.coli
<b>Sequence</b>	Met 1-Ala201
<b>Accession</b>	Q16619
<b>Calculated Molecular Weight</b>	22.6 kDa
<b>Observed molecular weight</b>	25 kDa
<b>Tag</b>	N-His

## Properties

<b>Purity</b>	> 95 % as determined by reducing SDS-PAGE.
<b>Endotoxin</b>	< 1.0 EU per µg of the protein as determined by the LAL method.
<b>Storage</b>	Store at < -20°C, stable for 6 months. Please minimize freeze-thaw cycles.
<b>Shipping</b>	This product is provided as liquid. It is shipped at frozen temperature with blue ice/gel packs. Upon receipt, store it immediately at < - 20°C.
<b>Formulation</b>	Supplied as a 0.2 µm filtered solution of PBS, 2mM EDTA, 5% Trehalose, pH 7.4.
<b>Reconstitution</b>	Not Applicable

## Data



> 95 % as determined by reducing SDS-PAGE.

## Background

Cardiotrophin-1, also known as CT-1 and CTF1, is a member of the IL-6 superfamily. It is a secreted cytokine that is expressed in heart, skeletal muscle, prostate and ovary, and to lower levels in lung, kidney, pancreas, thymus, testis and small intestine. The protein exerts its cellular effects by interacting with the glycoprotein 130 (gp130)/leukemia inhibitory factor receptor beta (LIFR) heterodimer. In addition, CT-1 activates phosphatidylinositol 3-kinase (PI-3 kinase) in cardiac myocytes and enhances transcription factor NF-κB DNA-binding activities.

## For Research Use Only

A Reliable Research Partner in Life Science and Medicine

Toll-free: 1-888-852-8623

Web: [www.elabscience.com](http://www.elabscience.com)

Tel: 1-832-243-6086

Email: [techsupport@elabscience.com](mailto:techsupport@elabscience.com)

Fax: 1-832-243-6017