

# SEC22B Polyclonal Antibody

Catalog Number:E-AB-52853



**Note:** Centrifuge before opening to ensure complete recovery of vial contents.

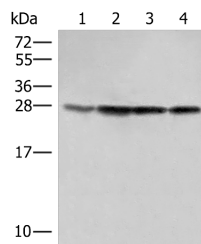
## Description

<b>Reactivity</b>	Human, Mouse, Rat
<b>Immunogen</b>	Fusion protein of human SEC22B
<b>Host</b>	Rabbit
<b>Isotype</b>	IgG
<b>Purification</b>	Antigen affinity purification
<b>Conjugation</b>	Unconjugated
<b>Formulation</b>	PBS with 0.05% NaN3 and 40% Glycerol,pH7.4

## Applications Recommended Dilution

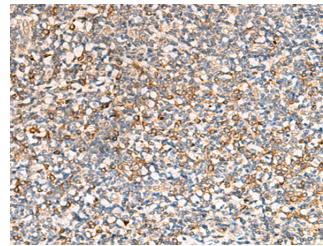
<b>WB</b>	1:500-1:2000
<b>IHC</b>	1:50-1:300
<b>ELISA</b>	1:5000-1:10000

## Data

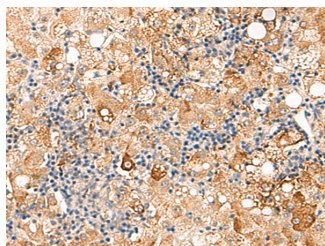


Western blot analysis of 231 HeLa LOVO and A172 cell lysates using SEC22B Polyclonal Antibody at dilution of 1:500

**Observed Mw:Refer to figures**  
**Calculated Mw:25 kDa**



Immunohistochemistry of paraffin-embedded Human tonsil tissue using SEC22B Polyclonal Antibody at dilution of 1:70(×200)



Immunohistochemistry of paraffin-embedded Human liver cancer tissue using SEC22B Polyclonal Antibody at dilution of 1:70(×200)

## Preparation & Storage

**Storage** Store at -20°C. Avoid freeze / thaw cycles.

## Background

### For Research Use Only

A Reliable Research Partner in Life Science and Medicine

Toll-free: 1-888-852-8623

Web: [www.elabscience.com](http://www.elabscience.com)

Tel: 1-832-243-6086

Email: [techsupport@elabscience.com](mailto:techsupport@elabscience.com)

Fax: 1-832-243-6017

# SEC22B Polyclonal Antibody

Catalog Number: E-AB-52853



The protein encoded by this gene is a member of the SEC22 family of vesicle trafficking proteins. It seems to complex with SNARE and it is thought to play a role in the ER-Golgi protein trafficking. This protein has strong similarity to Mus musculus and Cricetulus griseus proteins. SEC22B (SEC22 Homolog B, Vesicle Trafficking Protein (Gene/Pseudogene)) is a Protein Coding gene. Among its related pathways are Transport to the Golgi and subsequent modification and Innate Immune System. GO annotations related to this gene include syntaxin binding. An important paralog of this gene is SEC22A.

---

## For Research Use Only

A Reliable Research Partner in Life Science and Medicine

Toll-free: 1-888-852-8623

Tel: 1-832-243-6086

Fax: 1-832-243-6017

Web: [www.elabscience.com](http://www.elabscience.com)

Email: [techsupport@elabscience.com](mailto:techsupport@elabscience.com)