

## Recombinant GSK3 beta Monoclonal Antibody

catalog number: **E-AB-81450**

**Note:** Centrifuge before opening to ensure complete recovery of vial contents.

### Description

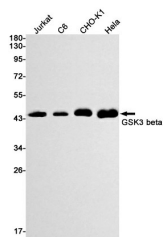
|                     |   |
|---------------------|---|
| <b>Reactivity</b>   | Human; Rat; Hamster   |
| <b>Immunogen</b>    | A synthetic peptide of human GSK3 beta  |
| <b>Host</b>         | Rabbit  |
| <b>Isotype</b>      | IgG   |
| <b>Clone</b>        | R09-7G8   |
| <b>Purification</b> | Affinity Purified   |
| <b>Buffer</b>       | 50mM Tris-Glycine(pH 7.4), 0.15M NaCl, 40% Glycerol, 0.05% stabilizer and 0.05% protective protein. |

### Applications

| Applications | Recommended Dilution |
|--------------|----------------------|
|--------------|----------------------|

|           |               |
|-----------|---------------|
| <b>WB</b> | 1:1000-1:2000 |
|-----------|---------------|

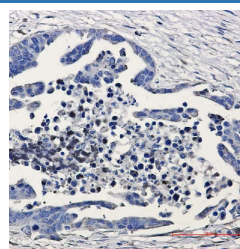
### Data



Western blot detection of GSK3 beta in Jurkat, C6, CHO-K1, Hela cell lysates using GSK3 beta Rabbit mAb (1:1000 diluted). Predicted band size: 47kDa. Observed band size: 47kDa.

**Observed-MV: 47 kDa**

**Calculated-MV: 47 kDa**



Immunohistochemistry of GSK3 beta in paraffin-embedded Human Cholangiocarcinoma using GSK3 beta Rabbit mAb at dilution 1:20

### Preparation & Storage

|                 |  |
|-----------------|--|
| <b>Storage</b>  | Store at -20°C Valid for 12 months. Avoid freeze / thaw cycles.  |
| <b>Shipping</b> | The product is shipped with ice pack, upon receipt, store it immediately at the temperature recommended. |

### Background

The protein encoded by this gene is a serine-threonine kinase belonging to the glycogen synthase kinase subfamily. It is a negative regulator of glucose homeostasis and is involved in energy metabolism, inflammation, ER-stress, mitochondrial dysfunction, and apoptotic pathways. Defects in this gene have been associated with Parkinson disease and Alzheimer disease.

### For Research Use Only