

Recombinant Human PPM1G/PP2C-gamma Protein (His Tag)



Catalog Number:PKSH032970

Note: Centrifuge before opening to ensure complete recovery of vial contents.

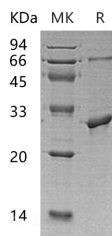
Description

Synonyms	Protein Phosphatase 1G;Protein Phosphatase 1C;Protein Phosphatase 2C Isoform Gamma;PP2C-Gamma;Protein Phosphatase Magnesium-Dependent 1 Gamma;PPM1G;PP2CG;PP2CGAMMA
Species	Human
Expression Host	E.coli
Sequence	Met317-Asp546
Accession	O15355
Calculated Molecular Weight	26.2 kDa
Observed molecular weight	30 kDa
Tag	C-His

Properties

Purity	> 95 % as determined by reducing SDS-PAGE.
Endotoxin	< 1.0 EU per µg of the protein as determined by the LAL method.
Storage	Store at < -20°C, stable for 6 months. Please minimize freeze-thaw cycles.
Shipping	This product is provided as liquid. It is shipped at frozen temperature with blue ice/gel packs. Upon receipt, store it immediately at < - 20°C.
Formulation	Supplied as a 0.2 µm filtered solution of 25mM Tris-HCl, 1mM DTT, 1mM EDTA, 2mM β-ME, 20% Glycerol, pH 7.5.
Reconstitution	Not Applicable

Data



> 95 % as determined by reducing SDS-PAGE.

Background

Protein Phosphatase 1G (PP1MG) is a cytoplasmic protein that belongs to the PP2C family. PPM1G is widely expressed; it is abundant in testis; skeletal muscle; and heart. PPM1G is a negative regulator of cell stress response pathways. PPM1G is responsible for the dephosphorylation of Pre-mRNA splicing factors; an important factor for the formation of functional spliceosome. PPM1G also plays a role in regulating cell cycle progression.

For Research Use Only

A Reliable Research Partner in Life Science and Medicine

Toll-free: 1-888-852-8623

Web: www.elabscience.com

Tel: 1-832-243-6086

Email: techsupport@elabscience.com

Fax: 1-832-243-6017