

FITC Anti-Human CD15/SSEA-1 Antibody[HI98]

Catalog Number: E-AB-F1079C

Note: Centrifuge before opening to ensure complete recovery of vial contents.

Description

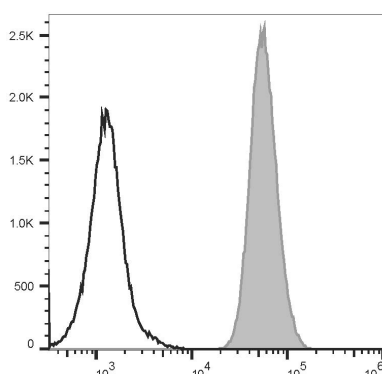
Reactivity	Human
Host	Mouse
Isotype	Mouse IgM, κ
Clone No.	HI98
Isotype Control	FITC Mouse IgM, κ Isotype Control[MM-30] [Product E-AB-F09782C]
Conjugation	FITC
Conjugation Information	FITC is designed to be excited by the Blue laser (488 nm) and detected using an optical filter centered near 530 nm (e.g., a 525/40 nm bandpass filter).
Storage Buffer	Phosphate buffered solution, pH 7.2, containing 0.09% sodium azide and 1% BSA.

Applications

Recommended usage

FCM	Each lot of this antibody is quality control tested by flow cytometric analysis. The amount of the reagent is suggested to be used 5 μL of antibody per test (million cells in 100 μL staining volume or per 100 μL of whole blood). Please check your vial before the experiment. Since applications vary, the appropriate dilutions must be determined for individual use.
------------	---

Data



Staining of normal human peripheral blood cells with FITC Anti-Human CD15/SSEA-1 Antibody[HI98] (filled gray histogram) or FITC Mouse IgM, κ Isotype Control (empty black histogram). Cells in the granulocytes gate were used for analysis.

Preparation & Storage

Storage	Keep as concentrated solution. This product can be stored at 2-8°C for 12 months. Please protected from prolonged exposure to light and do not freeze.
Shipping	Ice bag

Antigen Information

Alternate Names	3-FAL;3-FL;LNFP III;Lewis X;LexSSEA-1;X-hapten;SSEA-1
Uniprot ID	P22083
Gene ID	2526

For Research Use Only

Background

CD15 is 3-fucosyl-N-acetyllactosamine (3-FAL), also known as Lewis X, 3-FAL, X-hapten, and SSEA-1. CD15 is expressed on granulocytes and monocytes. It has also been shown to be expressed on Langerhans cells and some malignant cells. CD15 has been implicated in adhesion, as well as chemotaxis, phagocytosis, and bactericidal activity.