

## Recombinant Rat HER2/ErbB2 Protein (aa 67-323, His Tag)

Catalog Number: PKSR030455

**Note:** Centrifuge before opening to ensure complete recovery of vial contents.

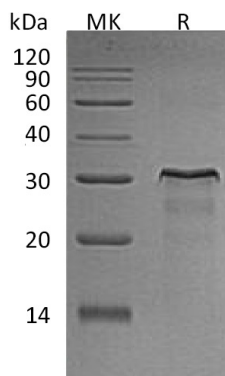
### Description

<b>Species</b>	Rat
<b>Source</b>	E.coli-derived Rat HER2/ErbB2 protein Ala67-Val323, with an C-terminal His
<b>Calculated MW</b>	29.3 kDa
<b>Observed MW</b>	32 kDa
<b>Accession</b>	P06494
<b>Bio-activity</b>	Not validated for activity

### Properties

<b>Purity</b>	> 95 % as determined by reducing SDS-PAGE.
<b>Endotoxin</b>	< 1.0 EU per µg of the protein as determined by the LAL method.
<b>Storage</b>	Generally, lyophilized proteins are stable for up to 12 months when stored at -20 to -80 °C. Reconstituted protein solution can be stored at 4-8°C for 2-7 days. Aliquots of reconstituted samples are stable at < -20°C for 3 months.
<b>Shipping</b>	This product is provided as lyophilized powder which is shipped with ice packs.
<b>Formulation</b>	Lyophilized from a 0.2 µm filtered solution of PBS, 5% Trehalose, 4M Urea, pH 7.4. Normally 5% - 8% trehalose, mannitol and 0.01% Tween 80 are added as protectants before lyophilization.
	Please refer to the specific buffer information in the printed manual.
<b>Reconstitution</b>	Please refer to the printed manual for detailed information.

### Data



### Background

ERBB2 belongs to the protein kinase superfamily, Tyr protein kinase family and EGF receptor subfamily. It contains a protein kinase domain. ERBB2 is widely expressed in epithelial cells, and amplification and/or overexpression of ErbB2 has been reported associated with malignancy and a poor prognosis in numerous carcinomas, including breast, prostate and ovarian cancers. Rat ERBB2 is an essential component of a neuregulin-receptor complex, although neuregulins do not interact with it alone. ErbB2 mediates signalling pathways which involve mitogen-activated protein kinase and phosphatidylinositol-3 kinase, this receptor plays a key role in development, cell proliferation and differentiation.

### For Research Use Only