

## IFI35 Polyclonal Antibody

**catalog number: E-AB-66789**

**Note:** Centrifuge before opening to ensure complete recovery of vial contents.

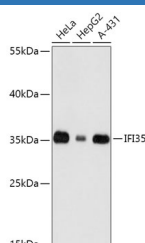
### Description

<b>Reactivity</b>	Human;Mouse
<b>Immunogen</b>	Recombinant fusion protein of human IFI35 (NP_005524.2).
<b>Host</b>	Rabbit
<b>Isotype</b>	IgG
<b>Purification</b>	Affinity purification
<b>Buffer</b>	Phosphate buffered solution, pH 7.4, containing 0.05% stabilizer and 50% glycerol.

### Applications

<b>WB</b>	1:500-1:2000
-----------	--------------

### Data



Western blot analysis of extracts of various cell lines using IFI35 Polyclonal Antibody at dilution of 1:1000.

**Observed-MW:35 kDa**

**Calculated-MW:31 kDa**

### Preparation & Storage

<b>Storage</b>	Store at -20°C Valid for 12 months. Avoid freeze / thaw cycles.
<b>Shipping</b>	The product is shipped with ice pack, upon receipt, store it immediately at the temperature recommended.

### Background

The Interferon family of proteins are able to alter the expression of a variety of target genes, thereby controlling various events within the cell. IFI-35 (Interferon-induced 35 kDa protein), also known as IFP35, is a 286 amino acid interferon-induced protein. Localized to the nucleus and expressed in macrophages, fibroblasts and epithelial cells, IFI-35 is a leucine zipper protein that can form homodimers, but, unlike most leucine zipper proteins, cannot bind DNA. Upon induction by IFN- $\alpha$ , IFI-35 associates with Nmi (N-Myc-interacting protein), resulting in the formation of a high molecular weight complex that is thought to play a role in IFN- $\alpha$  signaling and cellular responses. Once complexed with Nmi, IFI-35 is unable to be degraded by the proteasome, suggesting that IFI-35 is protected from degradation only when needed by IFN- $\alpha$ . Two isoforms of IFI-35 exist due to alternative splicing events.

### For Research Use Only