

CNPY2 Polyclonal Antibody

catalog number: **E-AB-52311**

Note: Centrifuge before opening to ensure complete recovery of vial contents.

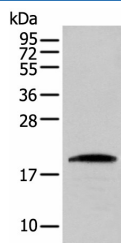
Description

Reactivity	Human;Mouse
Immunogen	Full length fusion protein
Host	Rabbit
Isotype	IgG
Purification	Antigen affinity purification
Buffer	Phosphate buffered solution, pH 7.4, containing 0.05% stabilizer and 50% glycerol.

Applications

Applications	Recommended Dilution
WB	1:500-1:2000
IHC	1:25-1:100

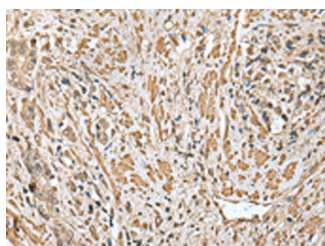
Data



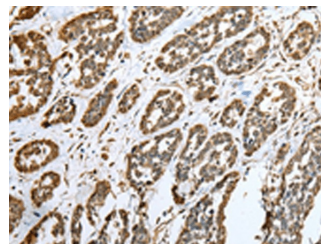
Western blot analysis of HEPG2 cell using CNPY2 Polyclonal Antibody at dilution of 1:300

Observed-MW:Refer to figures

Calculated-MW:21 kDa



Immunohistochemistry of paraffin-embedded Human prostate cancer tissue using CNPY2 Polyclonal Antibody at dilution of 1:25(×200)



Immunohistochemistry of paraffin-embedded Human esophagus cancer tissue using CNPY2 Polyclonal Antibody at dilution of 1:25(×200)

Preparation & Storage

Storage	Store at -20°C Valid for 12 months. Avoid freeze / thaw cycles.
Shipping	The product is shipped with ice pack,upon receipt,store it immediately at the temperature recommended.

Background

For Research Use Only

CNPY2, also named as MSAP, TMEM4 and ZSIG9, is a positive regulator of neurite outgrowth. It interacts with the ezrin-radixin-moesin (ERM)-like myosin regulatory light chain-interacting protein (MIR), and the two proteins are co-localized in cell lines and in primary neurons. CNPY2 can stabilize MRLC and thus bring about an increase in neurite outgrowth. This antibody is specific to CNPY2

For Research Use Only

Toll-free: 1-888-852-8623
Web: www.elabscience.com

Tel: 1-832-243-6086
Email: techsupport@elabscience.com

Fax: 1-832-243-6017

Rev. V1.7