

VCAM-1/CD106 Polyclonal Antibody(Capture/Detector)

catalog number: AN000920P



Note: Centrifuge before opening to ensure complete recovery of vial contents.

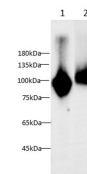
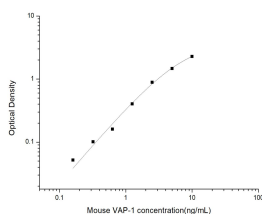
Description

Reactivity	Mouse;Rat
Immunogen	Recombinant Mouse VCAM-1/CD106 protein expressed by Mammalian
Host	Rabbit
Isotype	Rabbit IgG
Purification	Antigen Affinity Purification
Conjugation	Unconjugated
buffer	Phosphate buffered solution, pH 7.2, containing 0.05% proclin 300.

Applications

ELISA Capture	2-8 µg/mL
ELISA Detector	0.1-0.4 µg/mL
WB	1:1000-1:2000

Data



Sandwich ELISA-Recombinant Mouse VCAM-1/CD106 protein standard curve. Background subtracted standard curve using VCAM-1/CD106 antibody(AN000920P) (Capture), VCAM-1/CD106 antibody(AN000920P)(Detector) in sandwich ELISA. The reference range value for Recombinant Mouse VCAM-1/CD106 protein is 0.16-10 ng/mL.

Western blot with Anti VCAM-1/CD106 Polyclonal antibody at dilution of 1:1000. Lane 1: Mouse spleen tissue lysate, Lane 2: Rat spleen tissue lysate.

Preparation & Storage

Storage	Store at 4°C valid for 12 months or -20°C valid for long term storage, avoid freeze / thaw cycles.
Shipping	The product is shipped with ice pack, upon receipt, store it immediately at the temperature recommended.

Background

VCAM-1 (CD106), a member of the immunoglobulin superfamily, is a cell surface protein expressed by activated endothelial cells and certain leukocytes (such as macrophages). VCAM-1 expression is induced by IL-1 beta, IL-4, TNF-alpha and IFN-gamma. VCAM-1 binds to leukocyte integrins VLA-4 and alpha 4 beta 7. The human and mouse VCAM-1 proteins share approximately 76% amino acid similarity.

For Research Use Only

A Reliable Research Partner in Life Science and Medicine
Tel: 400-999-2100

Email: techsupport@elabscience.cn

Web: www.elabscience.cn

Rev. V1.5