

# ENO2 Monoclonal Antibody

catalog number: E-AB-22029

**Note:** Centrifuge before opening to ensure complete recovery of vial contents.

## Description

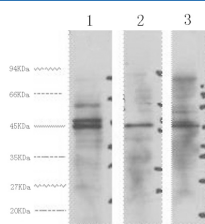
<b>Reactivity</b>	Human;Mouse;Rat
<b>Immunogen</b>	Synthetic Peptide
<b>Host</b>	Mouse
<b>Isotype</b>	IgG
<b>Clone</b>	2K3
<b>Purification</b>	Protein A purification
<b>Conjugation</b>	Unconjugated
<b>buffer</b>	Phosphate buffered solution, pH 7.4, containing 0.05% stabilizer, 0.5% protein protectant and 50% glycerol.

## Applications

## Recommended Dilution

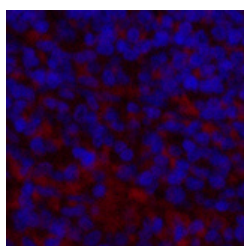
<b>WB</b>	1:500-1:3000
<b>IHC</b>	1:100-1:300
<b>IF</b>	1:100-1:300

## Data

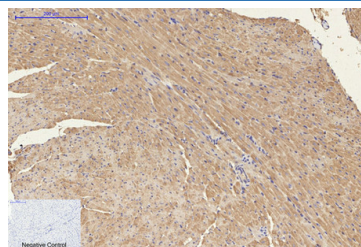


Western Blot analysis of 1) HeLa, 2) Jurkat, 3) 293T cells using ENO2 Monoclonal Antibody at dilution of 1:3000.

**Observed-MV:47 kDa**  
**Calculated-MV:47 kDa**



Immunofluorescence analysis of Mouse spleen tissue using ENO2 Monoclonal Antibody at dilution of 1:200.



Immunohistochemistry of paraffin-embedded Mouse heart tissue using ENO2 Monoclonal Antibody at dilution of 1:200.

## Preparation & Storage

<b>Storage</b>	Store at -20°C Valid for 12 months. Avoid freeze / thaw cycles.
<b>Shipping</b>	The product is shipped with ice pack, upon receipt, store it immediately at the temperature recommended.

## Background

Has neurotrophic and neuroprotective properties on a broad spectrum of central nervous system (CNS) neurons. Binds, in a calcium-dependent manner, to cultured neocortical neurons and promotes cell survival

## For Research Use Only