

GPR6 Polyclonal Antibody

catalog number: E-AB-19291

Note: Centrifuge before opening to ensure complete recovery of vial contents.

Description

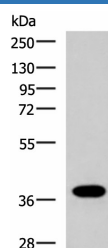
Reactivity	Human;Mouse;Rat
Immunogen	Synthetic peptide of human GPR6
Host	Rabbit
Isotype	IgG
Purification	Antigen affinity purification
Conjugation	Unconjugated
buffer	Phosphate buffered solution, pH 7.4, containing 0.05% stabilizer and 50% glycerol.

Applications

Recommended Dilution

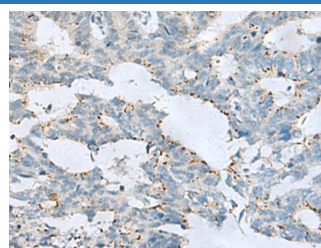
WB	1:1000-1:5000
IHC	1:50-1:100

Data



Western blot analysis of Human placenta tissue lysate using GPR6 Polyclonal Antibody at dilution of 1:1000

Observed-MV: Refer to figures
Calculated-MV: 38 kDa



Immunohistochemistry of paraffin-embedded Human colorectal cancer tissue using GPR6 Polyclonal Antibody at dilution of 1:80 (x200)

Preparation & Storage

Storage	Store at -20°C Valid for 12 months. Avoid freeze / thaw cycles.
Shipping	The product is shipped with ice pack, upon receipt, store it immediately at the temperature recommended.

Background

G protein-coupled receptor 6, also known as GPR6, is a protein which in humans is encoded by the GPR6 gene. GPR6 is a member of the G protein-coupled receptor family of transmembrane receptors. It has been reported that GPR6 is both constitutively active but in addition is further activated by sphingosine-1-phosphate. GPR6 up-regulates cyclic AMP levels and promotes neurite outgrowth.

For Research Use Only